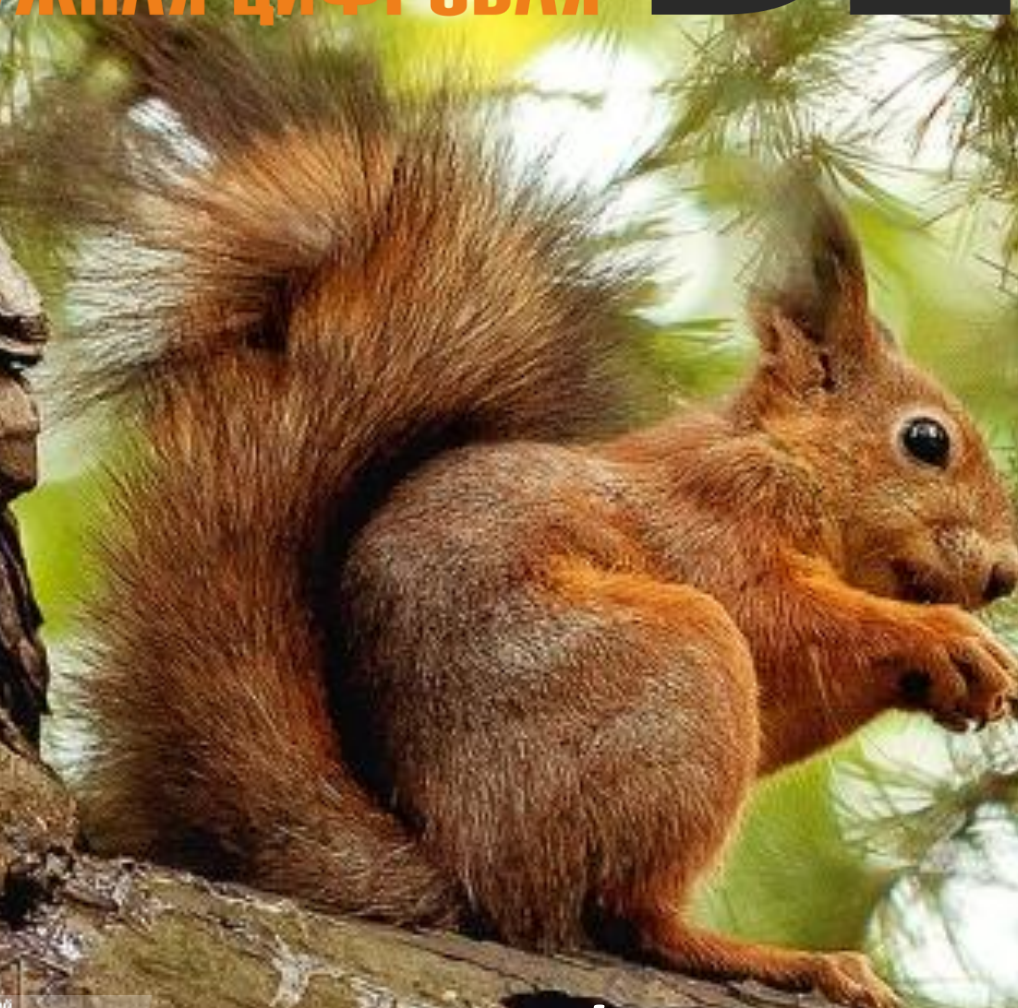


АНТЕННА
ТЕЛЕВИЗИОННАЯ
НАРУЖНАЯ ЦИФРОВАЯ

BELKA



саратовский
электроμηχανический завод

PEMO

Outdoor panel **antenna** for UHF digital
DVB-T/DVB-T2 and analogue TV reception.

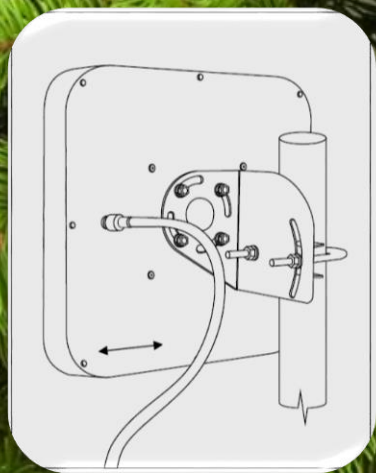


Outdoor panel **antenna**
for UHF digital DVB-T/DVB-T2
and analogue TV reception.



- Not affected by birds and ice accumulation
- Does not require service
- Not visible for thieves
- Modern design
- High signal gain

Install it on the balcony, on the roof, or on the building wall, and get ideal image quality in your TV!



Completed with standard mount fittings which allow mast or wall installation.

BELKA

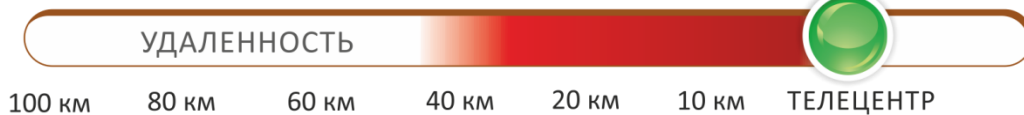


НЕ ПРАВИЛЬНО



ПРАВИЛЬНО

Для города и ближнего пригорода



The latest solution for outdoor use!

The set uncludes

- Antenna
- Coax cable, 6m
- Power supply
- User manual
- Packing box made of micro-pasteboard



Усиление
42дБ

АНТЕННА
ТЕЛЕВИЗИОННАЯ
НАРУЖНАЯ ЦИФРОВАЯ

BELKA

Specifications:

Operating frequencies, MHz: 470 - 800 (UHF)

Gain, dB: 42

Impedance, Ohm: 75

Socket type: F

Dimensions in packing: 250x300x60

Weight, not more than, kg: 0.9

REMO SARATOV ELECTROMECHANICAL FACTORY

P.O. Box 1334, Saratov, 410054, Russian Federation

Tel.: +7 (8452) 49-52-33 - Sales Department

e-mail: online@remo-zavod.ru

<http://www.remo-zavod.ru>



саратовский
электрохимический завод

РЕМО

