

# Indoor USB Wi-Fi antenna WiFiAgent

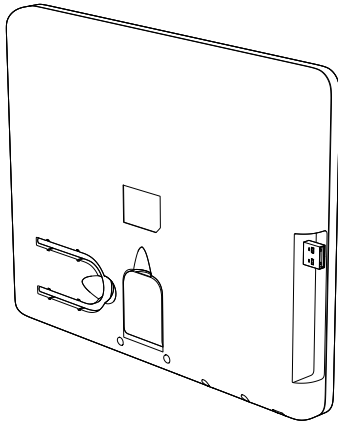
## QUICK USER GUIDE

Thank you for choosing the Indoor USB WiFi antenna WiFiAgent! It has been developed by a team of engineers determined to continue the tradition of excellence and innovation of REMO-Electronics products. The Indoor USB Wi-Fi antenna WiFiAgent is made of high-quality materials in accordance with thoroughly detailed design. The quality management system is certified by ISO 9001:2011.

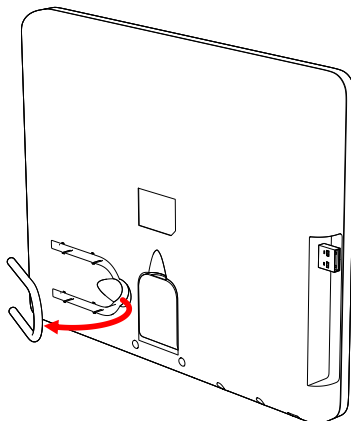
The antenna can be installed either on a table, or a shelf, or nearby a window, or any other horizontal surface. You won't even need any tools!

The WiFiAgent will improve the signal strength, as well as steadiness and accuracy of data transmission on 2400MHz wireless network. Built-in Wi-Fi adapter can provide the connection speed up to 150Mbps. A practical range of connection up to 1000 meters. Built-in Wi-Fi antenna adapter of WiFiAgent is compatible with Microsoft Windows XP/7/8/10 and different OS based on Linux.

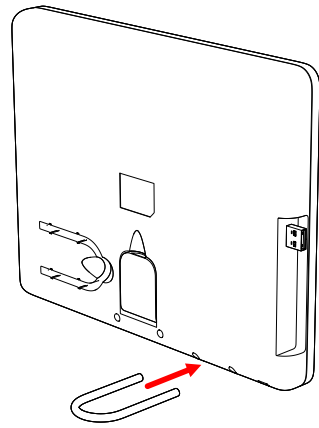
### Start



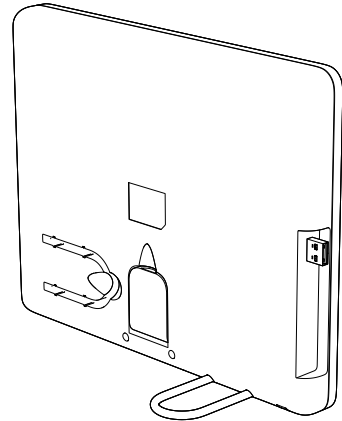
### Step 1



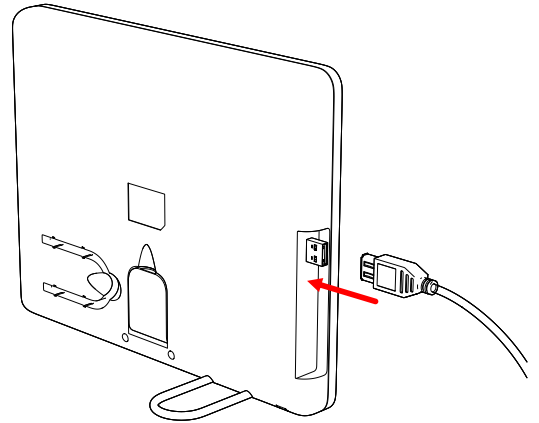
### Step 2



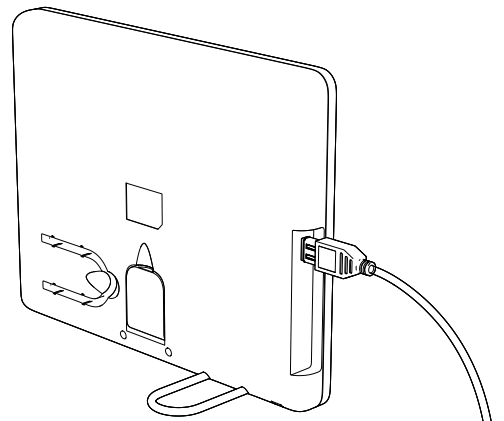
### Step 3



### Step 4

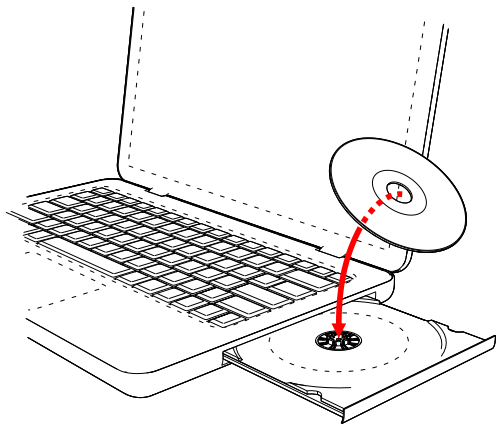


### Step 5

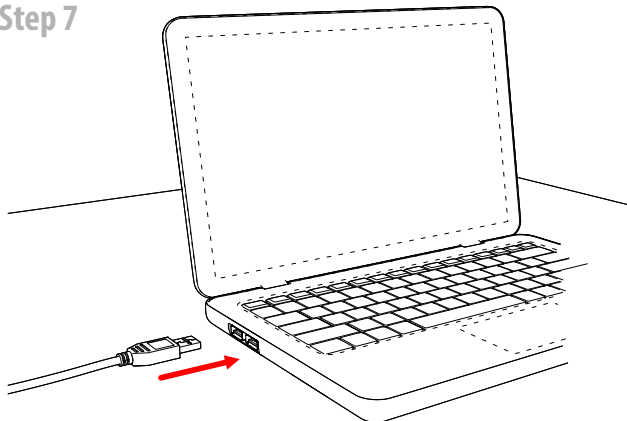


## Step 6

**Insert  
Install  
Reboot**

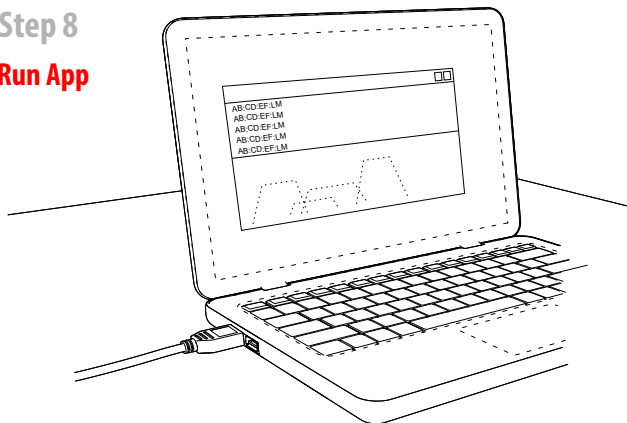


## Step 7



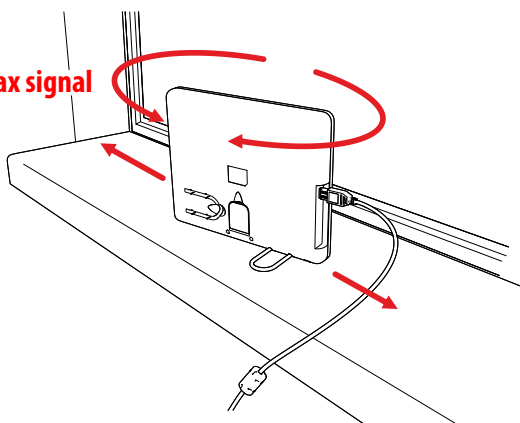
## Step 8

**Run App**

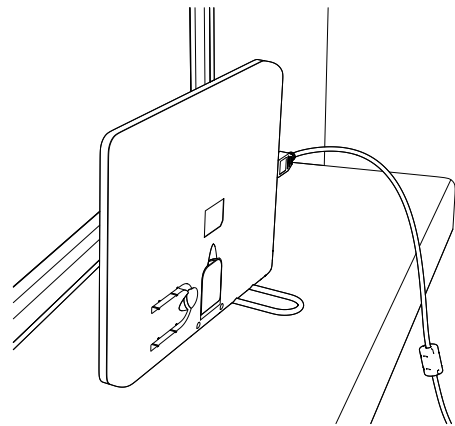


## Step 9

**Find max signal**



## Finish



In order to gain maximum signal, we recommend to use special utilities, which are able to scan Wi-Fi network and display detailed information for each wireless network that are within range of WiFigent.

As an example, we can specify the following utility (for installation on portable or stationary PC):

for Windows:

WirelessNetView ([www.nirsoft.net/utis/wireless\\_network\\_view.html](http://www.nirsoft.net/utis/wireless_network_view.html))

NetSpot ([www.netspotapp.com/netspot-windows.html](http://www.netspotapp.com/netspot-windows.html))

Free Wi-Fi Scanner ([lizardsystems.com/wi-fi-scanner/](http://lizardsystems.com/wi-fi-scanner/))

for Linux:

LinSSID ([sourceforge.net/projects/linssid/](http://sourceforge.net/projects/linssid/))

iwScanner ([kuthulu.com/iwscanner/index.php](http://kuthulu.com/iwscanner/index.php))

for OS X:

NetSpot ([www.netspotapp.com](http://www.netspotapp.com))

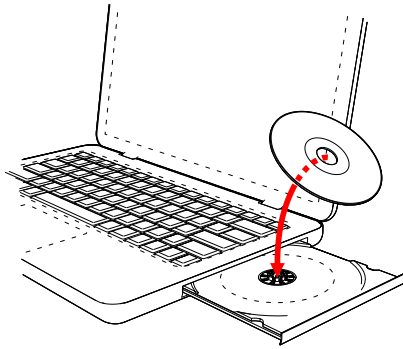
*Attention! These utilities can be presented as a demonstration and have the status of Shareware Trial Version with a limited trial period of use. Shareware programs may restrict commercial use, and periodically to remind the user about payment.*

This product comes with one year warranty against any defects in labor or materials. REMO-Electronics warrants this product is free from defects in material and workmanship for a period of one year from date of purchase. Our obligation under this warranty is limited to repair or replacement of any parts or workmanship that prove to be defective upon inspection. This warranty does not apply to normal wear and tear as well as to damages resulting from shipment, alteration or misuse of the product.

**REMO-Electronics, P.O.Box 500, Saratov, 410052, Russia**  
**[www.remo-electronics.com](http://www.remo-electronics.com)**

# Appendix 1. Using the utility Realtek

1



2



3

## Installation utility and driver



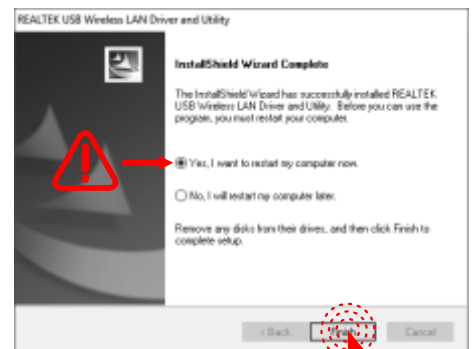
4



5



6

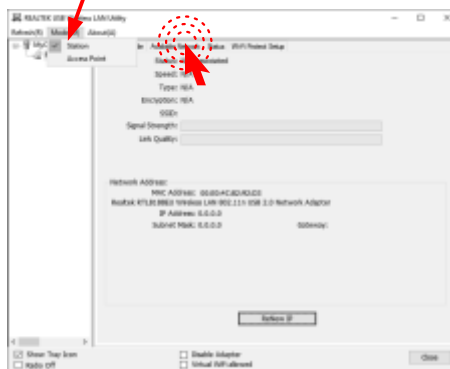


1



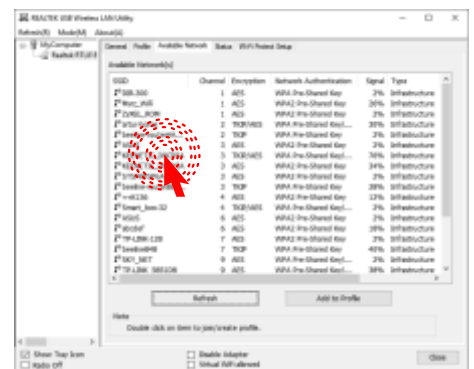
Run the utility by double-clicking

2



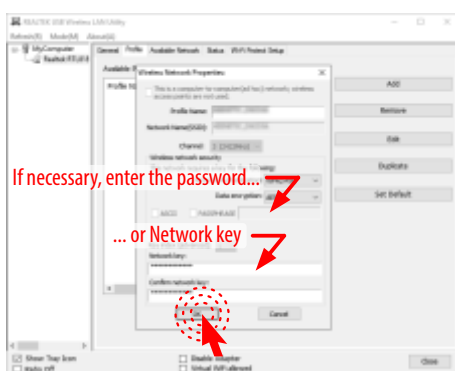
Click on the "Available network"

3



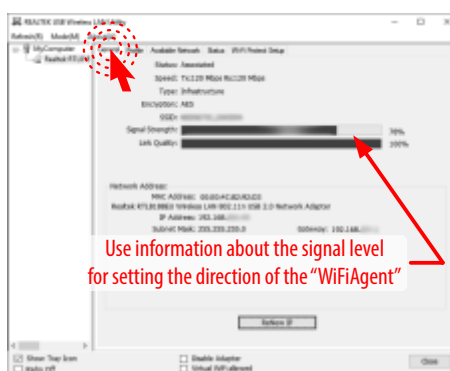
Select the network to which you want to connect

4



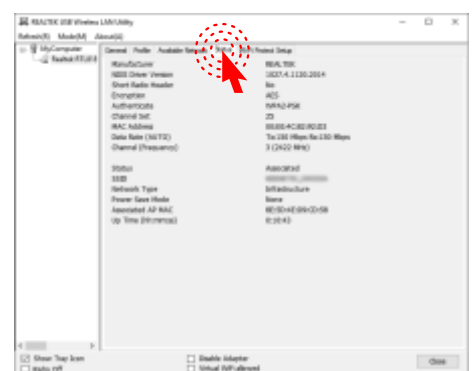
Confirm the network and its parameters.

5



Click on the "General"

6



## Connection to existing networks

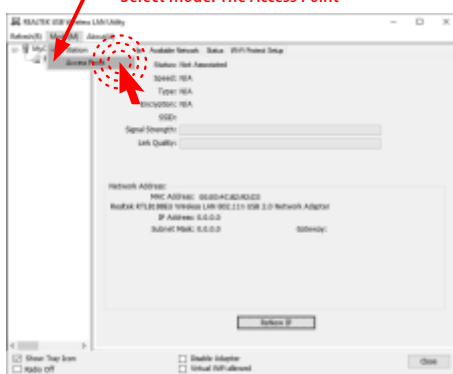
## Create your own Wi-Fi network (Access Point Mode)

1  Before switching to Access Point mode - disable the Windows firewall

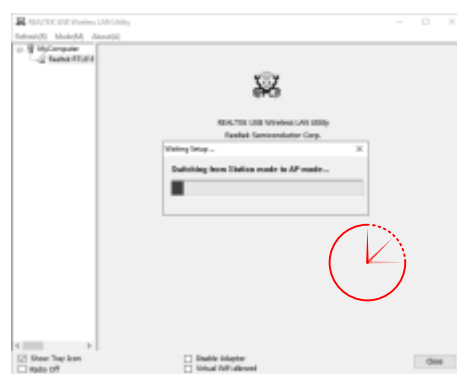


Run the utility by double-clicking

2  Select mode: The Access Point

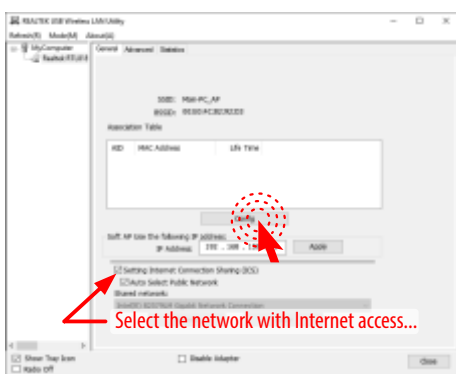


3 



Wait for switching the operation mode

4 



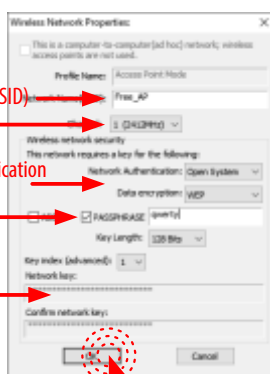
... and then click "Config"

5 

Select Network Name (SSID)  
Select Channel

Select Network Authentication  
and Data Encryption  
Enter Passphrase...

... or Network key



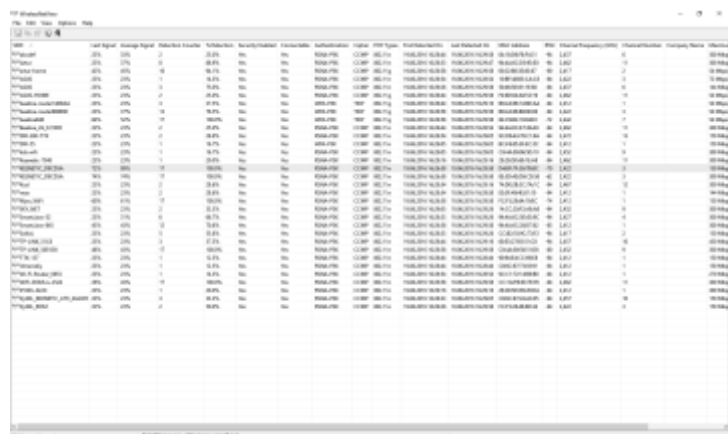
Confirm the wireless network settings

6 

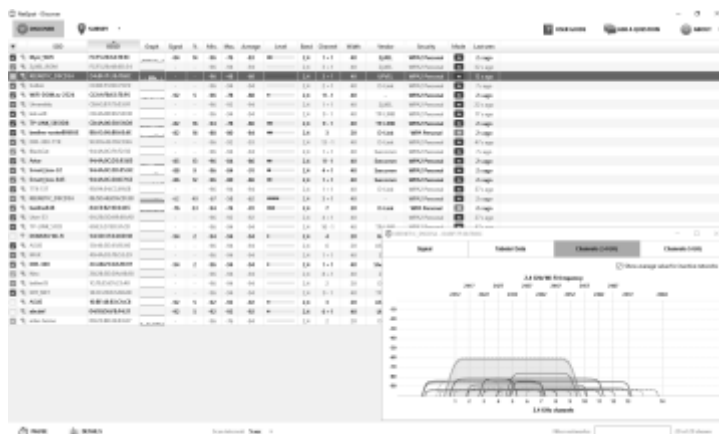


Make sure you have the Internet  
Connection Sharing

## Appendix 2. Utilities for searching and analyzing Wi-Fi networks



WirelessNetView ([www.nirsoft.net/utils/wireless\\_network\\_view.html](http://www.nirsoft.net/utils/wireless_network_view.html))



NetSpot ([www.netspotapp.com/netspot-windows.html](http://www.netspotapp.com/netspot-windows.html))



Free Wi-Fi Scanner ([lizardsystems.com/wi-fi-scanner/](http://lizardsystems.com/wi-fi-scanner/))



Wi-Fi Analyzer (The Store in Windows 10)