

**TV Antenna Outdoor
Omnidirectional for Vehicles
BAS-6103 Venus UHF**

QUICK USER GUIDE | ПАСПОРТ

Thank you for choosing the antenna outdoor BAS-6103 Venus UHF!

It has been developed by a team of engineers determined to continue the tradition of excellence and innovation of REMO-Technologii products. The antenna BAS-6103 Venus UHF is made of high-quality materials in accordance with thoroughly detailed design.

Features:

- Compatible with HDTV (DVB-T, DVB-T2, ATSC, ISDB-T, FreeTV, etc.).
- Built-in high-gain low-noise amplifier, shielded to eliminate interference.
- Omnidirectional antenna receives UHF TV-signal from every direction regardless on where you are traveling.
- Amplifier with SMD technology and micro-electronics ensure excellent antenna performance.
- Built-in filtering of signals 2G, 3G, LTE, WiFi and other radio-frequency interference.
- Waterproof antenna made of UV resistant ABS material
- Receiving range of TV signal up to 80 miles

Technical Specifications:

UHF — 470..790MHz
Gain — 30dB
Direction — omnidirectional
Power Supply — DC 11..28V 100mA
Size — 320x320x165mm
Weight — 0.850kg

In Box:

- Antenna (with cable) — 1pcs
- Mount Stand — 1pcs
- Locking Nut — 1pcs
- Sealing Cup — 1 pcs
- Sealing Ring — 1pcs
- Mounting Screw — 4pcs
- F-F connector — 1pcs
- Injector — 1pcs
- User Guide — 1pcs

Installation:

Step 1: Decide location of power supply before mounting your antenna. Antenna and power supply location will determine where and how you run the cables.

DO NOT install the antenna before you read this instruction.

Step 2: Drill a hole thru the roof to run cable from the antenna into your vehicle. Or if your vehicle have a cable hole already, run the cable thru hole to the antenna.

Step 3: Using 4 screw to securely fasten antenna mount to the roof. Do not over tighten the mounting bolts, damage to the mounting stand or roof may occur.

Step 4: Use cable tool to drive the cable into the mounting bracket on the underside of the antenna, aligning the end of the connector with the F connector on the antenna.

Step 5: Slide antenna onto the mount. Gently pull back any extra cable inside vehicle.

Step 6: Fasten antenna to mount and tighten hex nut. Tighten firmly to prevent antenna from turning on mount.

Step 7: Route the coaxial cable (Type RG-6/U, SAT-50, SAT-703 etc.) inside the vehicle.

Step 8: Connect the coaxial cable to the antenna and to the power injector.

Step 9: Connect power injector to supply – red wire to positive power supply 11-28 Volts DC, black wire to ground or negative power supply.

Step 10: Connect coaxial cable from the power injector to TV set.

Uninstalling the antenna and retaining the antenna mount:

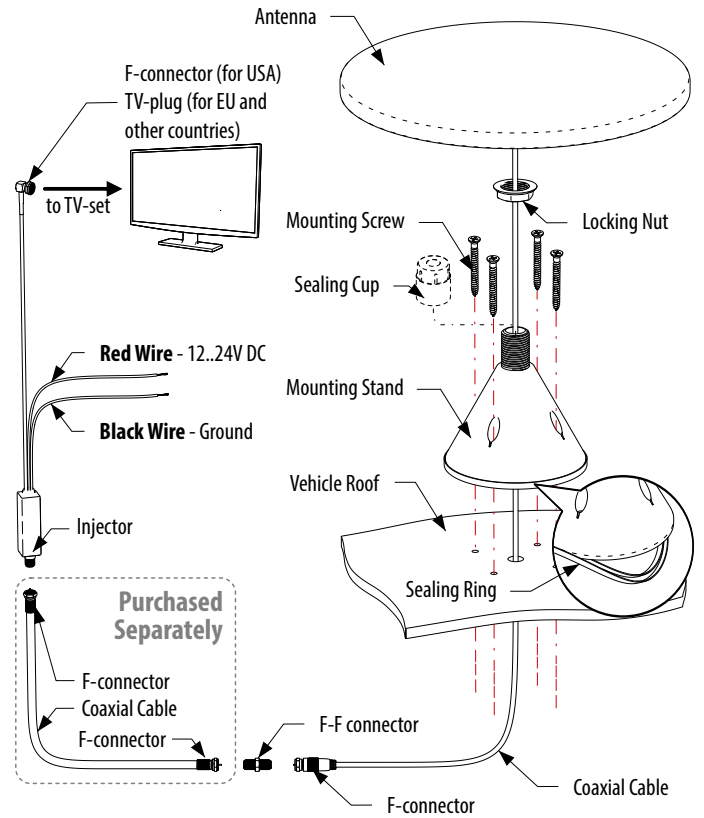
Step 1: Disconnect the coaxial cable from the injector.

Step 2: Loosen hex nut and remove the antenna from the mount.

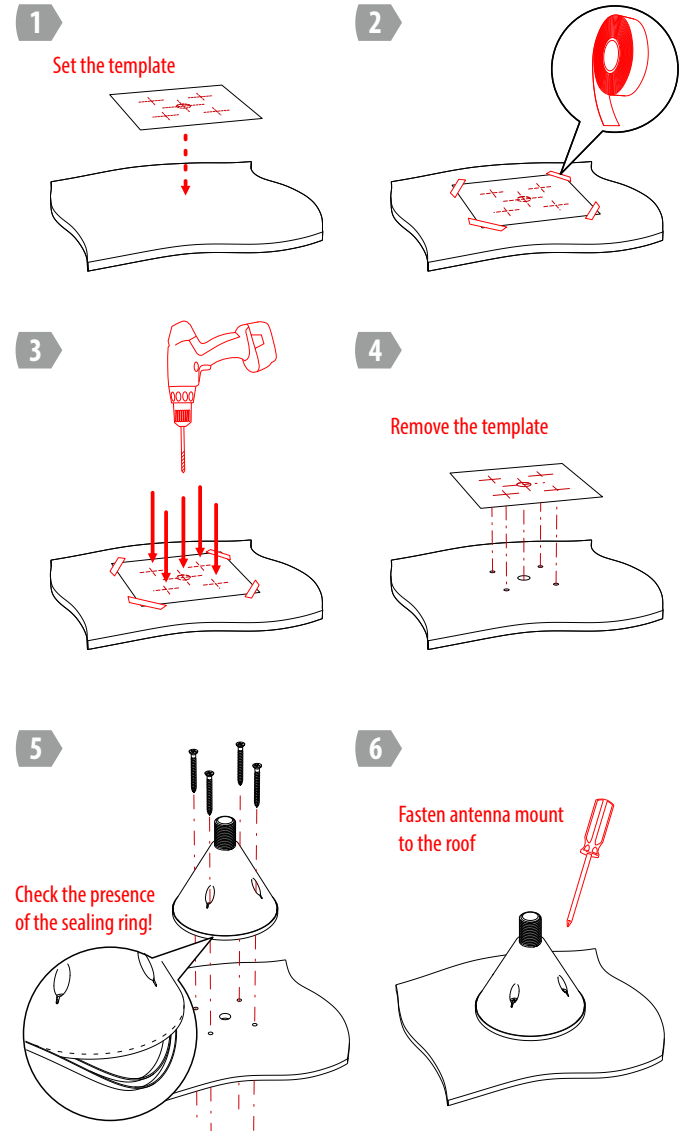
Step 3: Gently pull an extra cable out of the vehicle.

Step 4: Fasten the cup to mount and tighten hex nut.

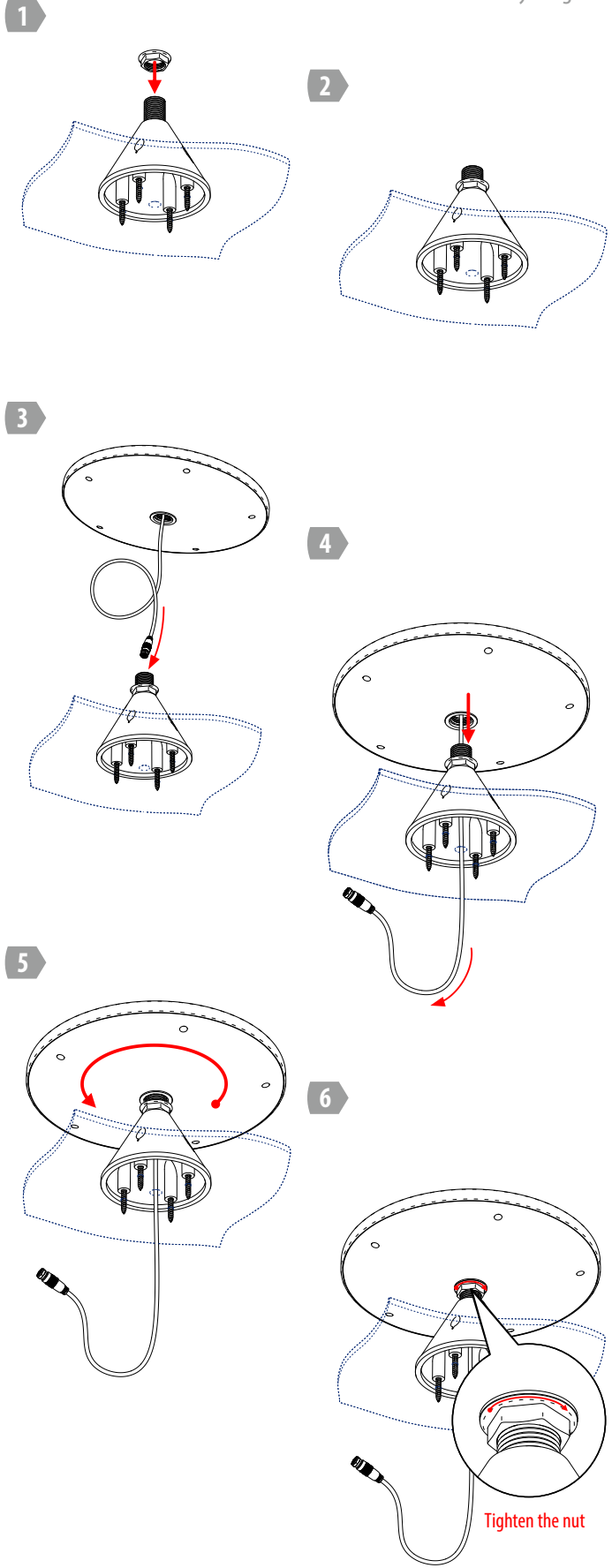
Antenna Installation & Connections Diagram



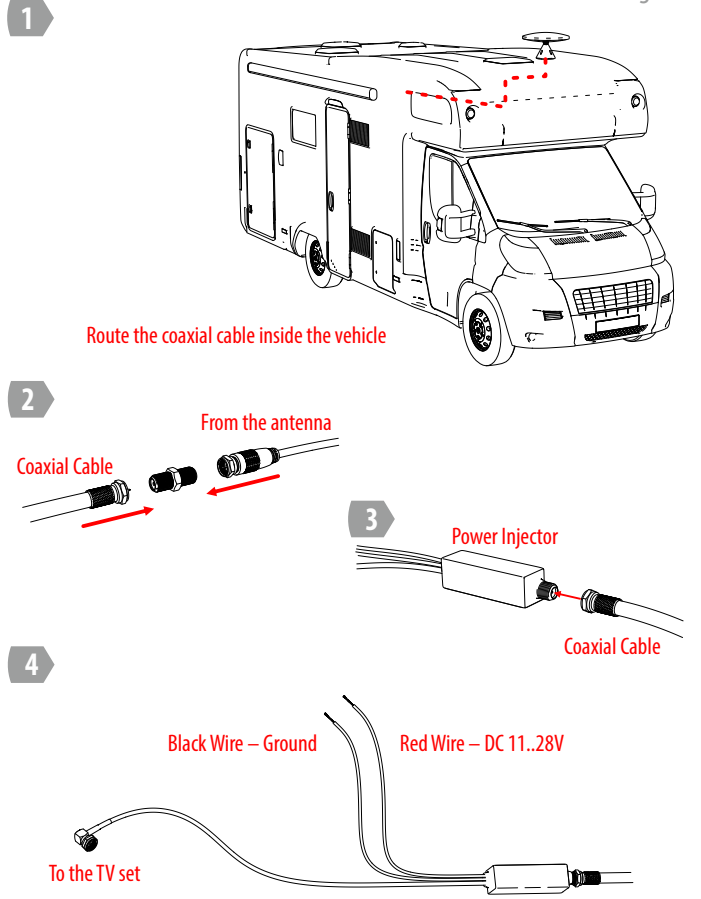
Installation Antenna Mount Diagram



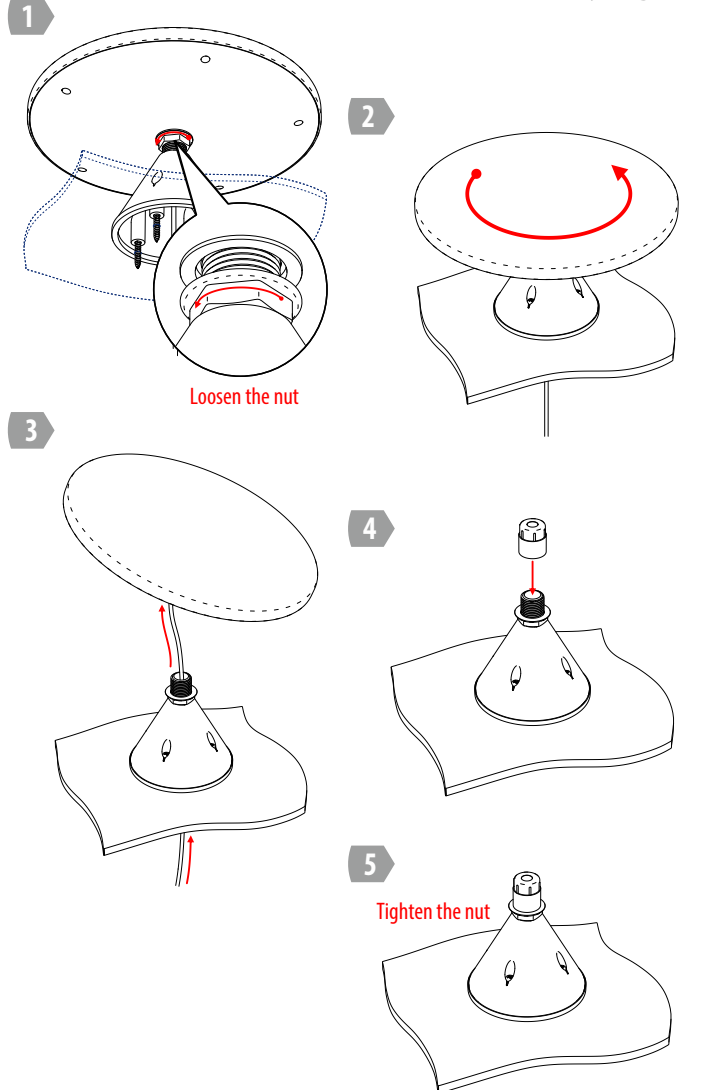
Antenna Assembly Diagram



Connections Diagram



Antenna Disassembly Diagram



TEMPLATE FOR MARKING AND DRILLING HOLES

