



**REMO**  
ELECTRONICS

CATALOG 2016  
REMO GROUP

[WWW.REMO-ELECTRONICS.COM](http://WWW.REMO-ELECTRONICS.COM)

410054, 50-let Oktyabrya, 101. Saratov, RUSSIA. Tel. / Fax: +7 (8452) 495-232, 495-242. E-mail: [online@remo-zavod.ru](mailto:online@remo-zavod.ru)

## OUR RETAIL PARTNER IN RUSSIA



Beeline™





# 2016

REMO GROUP  
410054, 50-let Oktyabrya, 101.  
Saratov, RUSSIA  
Tel. / Fax:  
+7 (8452) 495-232, 495-242.  
online@remo-zavod.ru,  
www.remo-electronics.com

## CONTENT

FACTORY INFORMATION

OUR BRANDS

HDTV INDOOR ANTENNAS

HDTV OUTDOOR ANTENNAS. CITY

HDTV OUTDOOR ANTENNAS. SUBURBAN

HDTV OUTDOOR ANTENNAS. LONG RANGE

ANTENNAS FOR FM-RADIO

DIGITAL SET-TOP-BOX

CAR ANTENNAS AND ACCESSORIES

GSM ANTENNAS

CELLULAR AMPLIFIERS. LTE2600

CELLULAR AMPLIFIERS. GSM900

KITS TO ENHANCE INTERNET SIGNAL

OUTDOOR ANTENNAS 3G/4G

INDOOR USB WIFI ANTENNA

ANTENNAS FOR WIFI-ROUTERS

WALL BRACKETS. AERIAL

WALL BRACKETS FOR SATELLITE DISHES

BRACKET FOR STB

WALL SHELF

TV ACCESSORIES

PRODUCTS FOR HAMRADIO

METALL CABINETS FOR HOME AUTOMATIC

# ABOUT THE FACTORY

OUR TWO ADJACENT REMO ELECTRONICS BUILDINGS CONTAIN SOME 8,000 SQUARE METERS OF PRODUCTION WORKSPACE. IN THAT AREA A RANGE OF MANUFACTURING, QUALITY CONTROL AND ADMINISTRATION DEPARTMENTS OPERATE. OUR MANUFACTURING DEPARTMENT INCLUDES MACHINING, ASSEMBLY, SMT LINE, GALVANIC AND PACKAGING DIVISIONS. IN OUR QUALITY CONTROL DEPARTMENT WE HAVE OUR DESIGN DIVISION, RADIO LABORATORY, IT FACILITY, LOGISTICS DIVISION, TRANSPORT SECTION AND MAINTENANCE GROUP. IN OUR ADMINISTRATIVE DEPARTMENT WE HAVE OUR MARKETING AND SALES, ACCOUNTING, HUMAN RESOURCES AND SECURITY GROUPS.

OVERALL, REMO HAS SOME 500 PRODUCTION MACHINES AND SUPPORTS MORE THAN FULL-TIME 300 EMPLOYEES. OUR UNIQUE FACTORY DESIGN ALLOWS RAPID ADAPTATION FOR QUICK PRODUCTION OF NEW STYLES OF ANTENNAS IN LARGE QUANTITIES. WE CAN PRODUCE 90,000 UNITS PER MONTH, WITH THE HIGHEST QUALITY CONTROL STANDARDS ANYWHERE IN THE WORLD.



Since 1991 REMO has been producing the most popular models of TV and communication antennas. Our brand is widely known among Russian customers.



The decision of starting a new brand of our production was made in 2015. Now all newly developed and produced antennae or accessories are called according to this brand.



## OUR BRANDS

WE ARE PROUD OF OUR PRODUCTION AND DO OUR BEST TO MAKE IT WELL KNOWN IN THE MARKET.

OUR ANTENNAS ARE DIFFERING FROM CHINESE PRODUCT. WE KNOW, WHAT IS COLD RUSSIAN WINTER AND LONG DISTANCES. OUR BRANDS ARE THE QUALITY MARK FOR OUR CUSTOMERS.

Brand «TVjet» appeared with the programm of transferring Russia to digital broadcasting. «TVjet» - are reliable and cheap receivers of DVBT2 and different accessories to it.

BRAND «CONNECT» unite products which improve the quality of mobile internet in the places of poor internet signal. The term «internet signal amplifier» which we have invented is now used by many companies for naming a whole class of devices.

# HDTV INDOOR ANTENNAS



THE ANTENNA HAS A **DESK VARIANT**  
AND IT'S WORKS IN THE **VERTICAL POSITION**



**BEST ANTENNA  
SOLUTIONS**

## INDOOR TV ANTENNA REMO BAS-5101

It's a compact indoor antenna for receiving digital TV signals in the city. Unlike similar models of other manufacturers, the antenna receives signals of horizontal polarization.



**RECEPTION TESTED**

**25  
km**

### Specification

	REMO BAS 5101	REMO BAS 5101 USB	REMO BAS 5101P
Band		UHF	
Gain, dbi	33	33	2
Dimensions in package, mm	205x115x30		
Weight, kg		0,17	
Supply	from STB	USB	-



THE ANTENNA CAN BE PUT ON TV-SETS WITH THE FDMI VESA FASTENING OR ONTO THE DIGITAL RECEIVER OR ANY SUITABLE SURFACE.

RECEPTION TESTED

25  
km

## INDOOR TV ANTENNA REMO BAS-5105

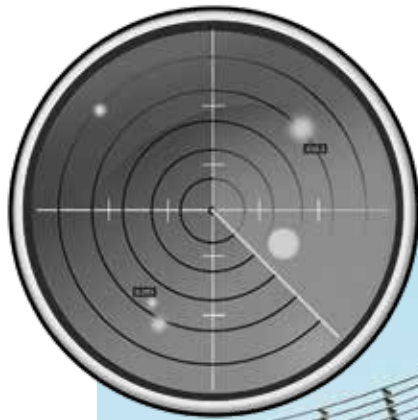
It is difficult to find a suitable place near a modern TV set to install an indoor antenna, especially if the TV set is mounted on the wall. But this antenna is just for such cases, since it includes a special bracket that allows fastening the antenna for the VESA mount. All modern TV sets have this mount. The innovative multi-layered reception element allows you to put on it any kinds of full color images.



ANY IMAGE CAN BE PRINTED ON THE SURFACE RECEIVING ELEMENTS.

### Specification

	REMO BAS 5105	REMO BAS 5105 USB	REMO BAS 5105P
Band	VHF3, UHF		
Gain, dbi	15-26	15-26	3-5
Dimensions in package, mm	205x115x30		
Weight, kg	0,17		
Supply	from STB	USB	-



RADAR-STYLE  
VHF/UHF HDTV ANTENNA



## INDOOR TV ANTENNA REMO BAS-5106 RADAR

This antenna has an original design in the military style. The concave element of the reception antenna effectively receives the whole frequency range which is used for digital broadcasting.

### Specification

	REMO BAS 5106	REMO BAS 5106 USB	REMO BAS 5106P
Band	VHF3, UHF		
Gain, dbi	15-26	15-26	2-4
Dimensions in package, mm	265x240x35		
Weight, kg	0,35	0,32	0,32
Supply	from STB	USB	-





## INDOOR TV ANTENNA REMO BAS-5302

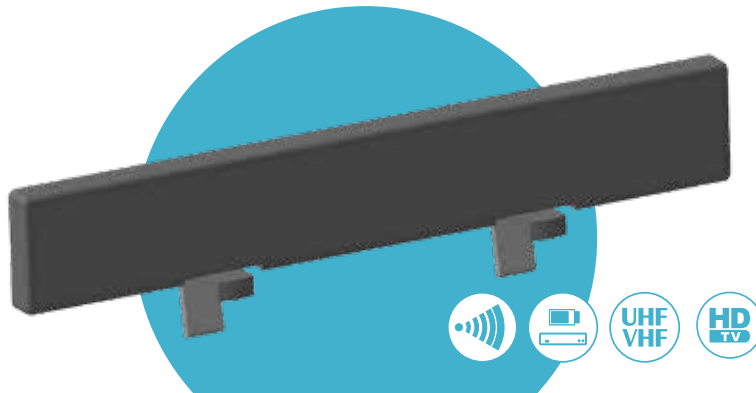
There are a lot of regions, where VHF1 still using for TV broadcasting. Telescopic rods of this antenna provide efficient reception of this band, and the built-in gain control allows selecting an optimal DVB-T2 reception.



CLASSIC DESIGN VHF/UHF  
INDOOR ANTENNA

### Specification

	REMO BAS 5302	REMO BAS 5302 USB
Band	VHF1, VHF3, UHF	
Gain, dbi	31-33,5	31-33,5
Dimensions in package, mm	285x115x120	
Weight, kg	0,5	0,5
Supply	220 V	USB

DVB<sup>®</sup>T2

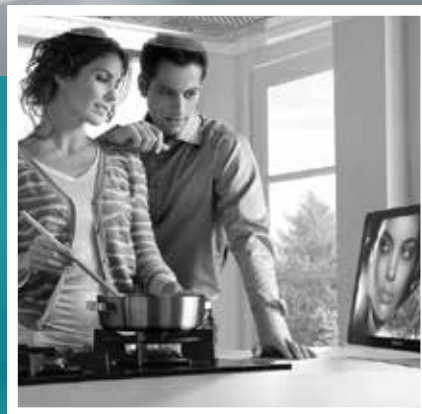
## INDOOR TV ANTENNA REMO BAS-5310 HORIZON

The «horizon» antennas are made for people, who do not like protruding wires. Antenna has mount at top edge of TV and all cables are hidden behind TV. Modern TV sets usually have a strict, laconic design, and the antenna repeats this line. The black shiny case will not be discordant with the realm of «black technique».

### Specification

	REMO BAS 5310	REMO BAS 5310 USB	REMO BAS 5310P
Band	VHF3, UHF		
Gain, dbi	33	33	2-4
Dimensions in package, mm	315x72x38		
Weight, kg	0.23		
Supply	from STB	USB	-





## INDOOR TV ANTENNA REMO BAS-5315

This antenna is a good choice for remote locations. If the signal is weak, and installation of the outdoor antenna is impossible, this antenna will help reach a maximum result for indoor antenna.

### Characteristics

	REMO BAS 5315	REMO BAS 5315P
Band	VHF1, VHF3, UHF	
Gain, dbi	31-33,5	2-8
Dimensions in package, mm	285x235x235	285x235x235
Weight, kg	0,9	0,76
Supply	220 V	-

**BAS**  
BEST ANTENNA  
SOLUTIONS



ANY IMAGE CAN BE PRINTED  
ON THE SURFACE RECEIVING ELEMENTS.

## AMPLIFIED INDOOR ANTENNA MICRO DIGITAL



### INDOOR ANTENNA ANTECO

It's a compact UHF antenna for quick installation. The innovative multi-layered reception element allows put any full color images. It makes the antenna an interesting item for marketing promotions or advertising campaigns. Compact size and stealth, coupled with good reception ability are the main features of the antenna.

#### Specification

	Anteco	Micro digital	Micro digital USB
Band	UHF		
Gain, dbi	2-3	33	33
Dimensions in package, mm	235x72x25	248x117x42	248x117x42
Weight, kg	0,05	0,06	0,06
Supply	-	from STB	USB



THIS ANTENNA IS MADE FOR FASTENING IT TO THE WINDOW GLASS, WHERE IT IS SAFELY KEPT BY TRANSPARENT SUCTION CUPS.



## INDOOR ANTENNA Mini DIGITAL

RECEPTION TESTED

25  
km



## INDOOR ANTENNA VEGA

RECEPTION TESTED

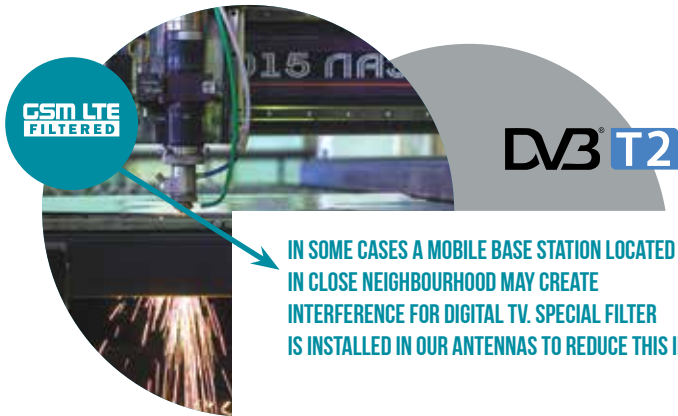
25  
km



The indoor antenna for receiving digital television «Mini Digital» and its passive modification «VEGA» are designed for usage in the city or in the suburbs. The design allows to mount the antennas on horizontal surface, and with the help of special suction cups to fix it on the window glass as well, and, if necessary, remove without traces.

### Specification

	Mini Digital	Mini Digital USB	Mini Digital 5V	VEGA
Band	UHF			
Gain, dbi	15-26	15-26	15-26	3-5
Dimensions in package, mm	215x180x50			200x240x35
Weight, kg	0,3	0,2	0,2	0,17
Supply	220 V	USB	from STB	-



IN SOME CASES A MOBILE BASE STATION LOCATED IN CLOSE NEIGHBOURHOOD MAY CREATE INTERFERENCE FOR DIGITAL TV. SPECIAL FILTER IS INSTALLED IN OUR ANTENNAS TO REDUCE THIS INTERFERENCE



## INDOOR ANTENNA VOLNA DIGITAL

It's a digital active indoor antenna. It receives the signals of analogue and digital television DVB-T/T2.



## INDOOR ANTENNA ZARYA DIGITAL

It's a wideband active indoor antenna. It receives the signals of analogue and digital television DVB-T/T2. It has a gain control.

### Specification

	VOLNA DIGITAL	VOLNA DIGITAL 5V	ZARYA DIGITAL
Band	VHF3, UHF	VHF3, UHF	VHF1, VHF3, UHF
Gain, dbi	20-25	20-25	21-30
Dimensions in package, mm	280X150X120		
Weight, kg	0,53	0,53	0,55
Supply	220 V	from STB	220 V



## INDOOR ANTENNA VIVA

It's a active digital TV indoor wideband antenna. It receives the signals of analogue and digital television DVB-T/T2. It can be mounted on the glass. It has a gain control.



### Specification

Band	VHF1, VHF3, UHF
Gain, dbi	42
Dimensions in package, mm	345x170x50
Weight, kg	0,36
Supply	220 V





WIDEBAND HDTV ANTENNA  
WITH FLEXIBLE RECEIVING  
ELEMENTS FOR VHF BAND.



## INDOOR ANTENNA **INTER 2.0**

Is an directional active antenna on the basis of the log-periodic structure and flexible vibrators of the VHF band. It receives the signals of analogue and digital television DVB-T/ T2. The new amplifier design is not susceptible to interference and has an amplifier control.



### Specification

	<b>INTER 2.0</b>	<b>INTER 2.0 USB</b>	<b>INTER 2.0 P</b>
Band	UHF1, UHF3, UHF		
Gain, dbi	33	33	2-7
Dimensions in package, mm	255x235x80		
Weight, kg	0,67	0,6	0,6
Supply	220 V	USB	-







## INDOOR ANTENNA SIRIUS 2.0

The TV indoor passive antenna SIRIUS 2.0 is designed for reception TV programmes in the UHF band (21-69 channels) in the digital DVB-T/DVB-T2 and analogue broadcasting formats. The antenna is optimized for digital broadcasts, but, at the same time, «Sirius 2.0» allows to receive analogue signals transmitted in the same band.



## INDOOR ANTENNA FOBOS 2.1

The digital indoor terrestrial television antenna is designed for reception signals of programs in the UHF band (21-69 channel, frequency 470-862 MHz). This antenna is good at reception of digital TV signal DVB-T and DVB-T2, but in regions where there is no digital broadcasting, it provides high-quality reception of all UHF channels of the analogue broadcasting.



## INDOOR ANTENNA TVJET BAS5340

### Specification

	SIRIUS 2.0	FOBOS 2.1	FOBOS 2.1 5V	FOBOS USB	TVJET BAS5340	TVJET BAS5340 5V	TVJET BAS5340 USB
Band	UHF				VHF, UHF		
Gain, dbi	5-7	30-42	30-42	30-42	8	35-45	35-45
Dimensions in package, mm	250x240x80						
Weight, kg	0,53	0,67	0,56	0,56	0,5		

LIGHTWEIGHT AND STABLE CONSTRUCTION CAN GIVE A LONG LIFETIME OF THE ANTENNA. SEPARATELY TUNING VHF AND UHF DIRECTION.

8x1   15x15x1



INDOOR ANTENNA  
**STRIZH 3.5**



INDOOR ANTENNA  
**STRIZH 2.5**

#### Specification

	STRIZH 3.5		STRIZH 3.0		STRIZH 2.5		STRIZH 2.0		STRIZH 1.5		STRIZH 1.0	
	- P	- USB	- P	- USB	- P	- USB	- P	- USB	- P	- USB	- P	- USB
Band	VHF/UHF		UHF		VHF/UHF		UHF		VHF/UHF		UHF	
Gain, dbi	6	26	6	26	6	26	6	26	6	26	6	26
Dimensions in package, mm	311x304x80											
Weight, kg	0.5											
Supply	-	USB	-	USB	-	USB	-	USB	-	USB	-	USB



INDOOR ANTENNA  
**STRIZH 1.5**



INDOOR ANTENNA  
**STRIZH 3.0**



INDOOR ANTENNA  
**STRIZH 2.0**



INDOOR ANTENNA  
**STRIZH 1.0**

# HDTV OUTDOOR ANTENNAS. CITY

The wide beamwidth allows receive effectively digital signals in areas with the reflected or reradiated signal.

## OUTDOOR ANTENNA GALAXY



Specification

	<b>GALAXY</b>	<b>NEXT</b>	<b>UFO DX</b>	<b>UFO 5V</b>
Band	VHF, UHF		UHF	
Gain, dbi	30-35	1-8	30-35	30-35
Dimensions in package, mm	250x240x80			
Weight, kg	1,25	1,1	1	0,9
Supply	220 V	-	12 V	SBT

## OUTDOOR ANTENNA UFO

It is a compact urban outdoor television antenna that has a plastic radio-transparent body to protect it from atmospheric phenomena.



## OUTDOOR ANTENNA NEXT





THIS HDTV ANTENNAS HAVE UNUSUAL EXTERIOR ,SIMILAR ON ANTENNAS FOR MOBILE NET OR DATA.  
THE RECEIVING ELEMENT IS PROTECTED BY RUGGED PLASTIC CASE

## HDTV ANTENNA TVFLAT



Outdoor HDTV antenna for reception of DVB-T/DVB-T2 and analogue TV broadcasting in the UHF band. It has a high gain, compact size, modern design. It is supplied with the universal mount on the brackets and masts. Connection to the cable is via F-connector.

### Specification

Band	UHF
Gain, dbi	7,8-10
Dimensions in package, mm	290X250X120
Weight, kg	1,66

## HDTV ANTENNA BELKA



Active outdoor HDTV antenna for reception of DVB-T/ DVB-T2 and analogue TV broadcasting in the UHF band. It has a built-in low noise amplifier. It is supplied with the universal mount on the brackets and masts. Connection to the cable is via F-connector.

### Specification

Band	UHF
Gain, dbi	28-35
Dimensions in package, mm	290X250X120
Weight, kg	2



### OUTDOOR ANTENNA SPRINT 3

It's a compact directional antennas for local reception.  
Lightweight and stable aluminium construction can give a long lifetime of the antenna.



### OUTDOOR ANTENNA SPRINT 4



#### Specification

	SPRINT 3		SPRINT 4	
	- P	- USB	- P	- USB
Band	UHF			
Gain, dbi	6	26	7	27
Dimensions in package, mm	311x304x80			
Weight, kg	0.5		0.65	
Supply	220 V		220 V	

## COMPACT CITY ANTENNA FOR RECEIVING DIGITAL AND ANALOG SIGNALS IN UHF BAND. VERY CONVENIENT FOR BALCONY AND WINDOW INSTALLING.



RECEPTION TESTED **40**  
km

8x1   15x15x1

### OUTDOOR ANTENNA KORSAR

The outdoor antenna CORSAR is designed for reception of digital TV signal DVB-T2 and analogue TV in the UHF band. It is compatible with many models of modern TVs with digital tuners DVB-T/T2 and digital receivers (receivers) intended for the reception of digital television DVB-T2.



RECEPTION TESTED **40**  
km

8x1   15x15x1

### OUTDOOR ANTENNA PARUS

The outdoor antenna PARUS is designed for reception of digital TV signal DVB-T2 and analogue TV in the UHF band. It is suitable for collateral usage with many models of modern TVs with digital tuners DVB-T/T2 and digital receivers (receivers), intended for the reception of digital television DVB-T2.



#### Specification

	KORSAR			PARUS		
	- P	- DX	- USB	- P	- DX	- USB
Gain, dbi	8	33	33	8	33	33
Dimensions in package, mm	400x340x80			400x340x80		
Weight, kg	1			1,2		
Supply	-	220 V	USB	-	220 V	USB

## OUTDOOR ANTENNA COLIBRY DELUXE



## OUTDOOR ANTENNA COLIBRY DIGITAL



IT IS LIKE A BUSINESS CARD OF OUR FACTORY.  
IT'S A MOST POPULAR ANTENNA IN THE HISTORY OF OUR  
FACTORY. AN EXCELLENT COMBINATION OF  
COMPACTNESS AND EFFICIENCY.

Is an original small-sized antenna. It is indispensable  
when installed in the balcony or loggia. It provides a  
good reception in the areas of reflected signals.

### Specification

	COLIBRY DELUXE		COLIBRY DIGITAL	COLIBRY DIGITAL 5V
	- DX	-PF		
Band	VHF1, VHF3, UHF		UHF	
Gain, dbi	20-33	2-9	33	33
Dimensions in package, mm	460x280x90		350x280x90	335x275x75
Weight, kg	2,1		1,5	1,3
Supply	220 V		220 V	STB





## OUTDOOR ANTENNA MICRON

The antenna MICRON is suitable for areas of reliable reception of digital DVB-T and DVB-T2 as well as analogue television signals. The antenna is equipped with the anti-GSM filter that suppresses the signals of GSM base stations on the amplifier input.

RECEPTION TESTED **40**  
km

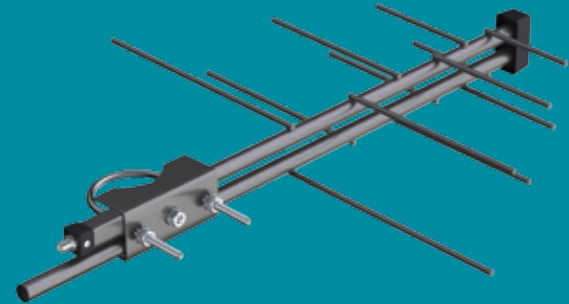
8x1 15x15x1

### Specification

		MICRON		MICRON UHF	
		- P	- DX	- P	- DX
Gain, dbi	MB 1-5	1	21	-	-
	MB 6-12	2	22	-	-
	ДМВ	10	35	12	37
Dimensions in package, mm		375x260x80		375x260x80	
Weight, kg		0,67		0,67	

RECEPTION TESTED **40**  
km

8x1 15x15x1



## OUTDOOR ANTENNA DVINA

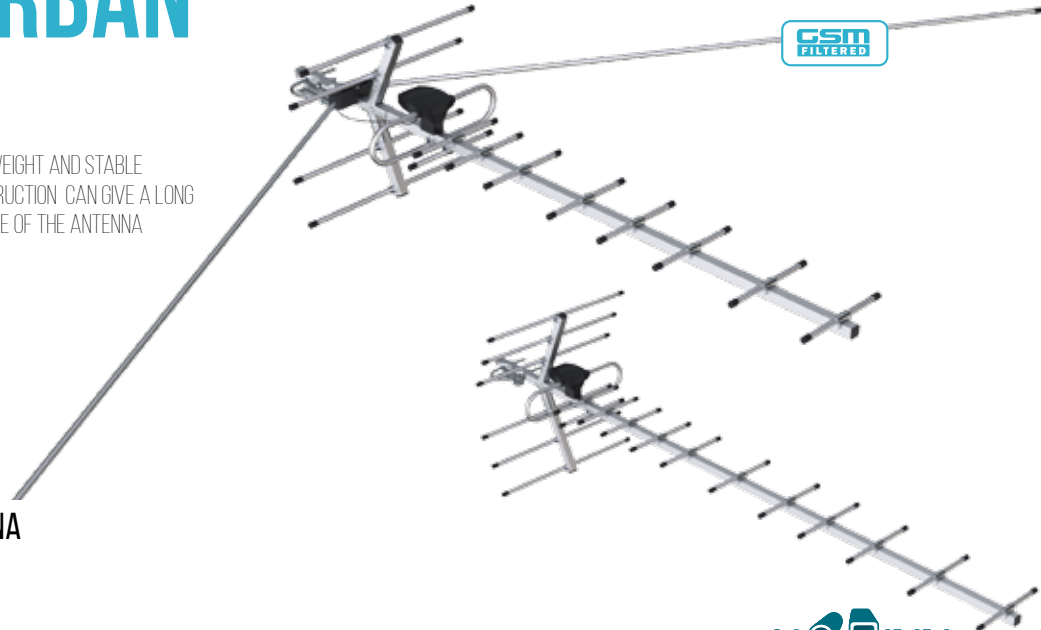
The outdoor UHF band antenna «Dvina» is best suited for the transition to digital television in the city or middle suburbs. It is optimal at the distances up to 25 km from the transmitter.

	ДВИНА		
	- F	- DX	- DX 5V
Band	UHF		
Gain, dbi	7	27	27
Dimensions in package, mm	380x320x50		
Weight, kg	0,5	0,62	0,5
Supply	-	220 V	STB

# HDTV OUTDOOR ANTENNAS. SUBURBAN



LIGHTWEIGHT AND STABLE  
CONSTRUCTION CAN GIVE A LONG  
LIFETIME OF THE ANTENNA



## OUTDOOR ANTENNA DIAPAZON

The outdoor antenna DIAPAZON is suitable for zones of uncertain signal reception. It is efficient in the city and in the suburbs. The antenna is equipped with the anti-GSM filter that suppresses the signals of GSM base stations on the amplifier input.

8x1   15x15x1

RECEPTION TESTED

60  
km

### Specification

		DIAPAZON		DIAPAZON MAXI		DIAPAZON UHF		DIAPAZON UHF MAXI	
		- P.	- DX	- P.	- DX	- P.	- DX	- P.	- DX
Band		VHF, UHF		VHF, UHF		VHF, UHF		VHF, UHF	
Gain, dbi	MB 1-5	1	21	1	21	-	-	-	-
	MB 6-12	2	22	2	22	-	-	-	-
	DMB	12	31	14	36	12	31	14	36
Dimensions in package, mm		1200x370		1350x255x85		1100x300x100		1350x250x80	
Weight, kg		1,2		1,42		1		1	



## OUTDOOR ANTENNA TWIN-SUPER

The antenna has a radial VHF-vibrator and 6 directors of the UHF band, it has a good gain for all TV broadcasting frequencies.

### Specification

	TWIN-SUPER		ALBATROS SUPER DELUXE	
	- F	- A-DX	- F	- A-DX
Band	VHF1, VHF3, UHF			
Gain, dbi	3-13	33-43	1-13	31,5-43
Dimensions in package, mm	1060x280x80		1050x290x29	
Weight, kg	2,5		2,4	
Supply		220 V		220 V



## OUTDOOR ANTENNA ALBATROS-SUPER Deluxe

It is a classic broadband antenna. It is effective in urban areas and outside the city as well.



## OUTDOOR ANTENNA **CITY Compact**

The most compact wideband TV antenna for reliable reception areas. It consists of shortened VHF elements and a log-periodic section for the UHF band. Packed in a full color box.

## OUTDOOR ANTENNA **LOGO-P6M**

The most popular wideband antenna of the «LOGO» series. It has the best ratio of price and quality.

## OUTDOOR ANTENNA **LOGO-P8M**

It is an antenna with increased gain at UHF - band, has a sufficiently high uniformity of characteristics across the entire range.

### Specification

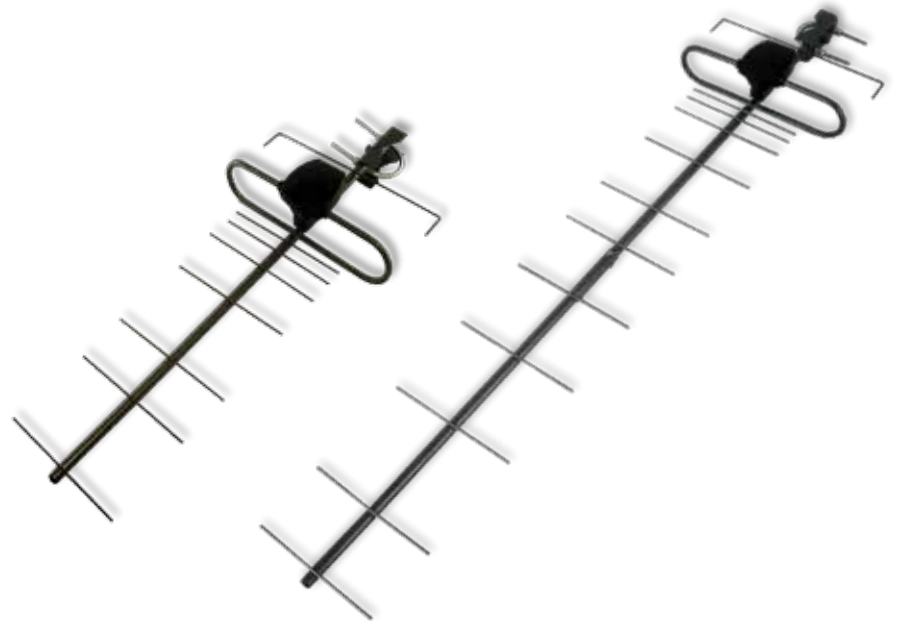
	SITY-COMPACT	LOGO-P6M		LOGO-P8M		LOGO-P2M	
		-F	-A-DX	-F	-A-DX	-F	-A-DX
Band	VHF1, VHF3, UHF			VHF1, VHF3, UHF			
Gain, dbi	22-28	1,5-9	31,5-39	1,5-9	31,5-43	1,5-9	31,5-39
Dimensions in package, mm	500x320x60	1040x320x70		1050x300x80		1450x900x80	
Weight, kg	1,28	1,1		1,4		2,2	
Supply	220 V	-	220 V	-	220 V	-	220 V



## OUTDOOR ANTENNA COMET

Rugged all-welded steel HDTV yagi antennas have polymer coating for long time functionality. This antennas can be equipped by amplifier with adapter or USB power.

## OUTDOOR ANTENNA SPIRE



## OUTDOOR ANTENNA LOGO-P2M

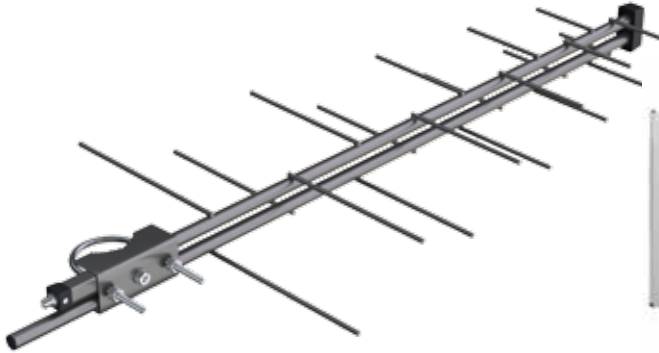
This antenna provides a good gain across the entire spectrum of television broadcasting. One of the few wideband antennae having directivity on VHF3.

### Specification

	SPIRE			COMET		
	-F	- 5V	-USB	-F	- 5V	-USB
Band				UHF		
Gain, dbi	14	42	42	12	35	35
Dimensions in package, mm	660x260x90			610x260x80		
Weight, kg	0,8			0,5		
Supply	-	220 v	USB	-	220 v	USB



STEEL ALL-WELDED STRUCTURE AND POLYMER COATING MAKE THESE ANTENNAS VERY DURABLE AND RELIABLE., A CABLE CONNECTOR MAKES THEM VERY EASY TO INSTALL. MANY PEOPLE WHO INSTALLED THESE ANTENNAE ALSO ASSESSED THEIR BENEFITS.



## OUTDOOR ANTENNA PECHORA

The outdoor band antenna «Pechora» is a perfect choice for economical transition to digital reception in the suburbs at the distance of 40km from the transmitter.



RECEPTION TESTED **40**  
km



8x1  15x15x1

## OUTDOOR ANTENNA NEPTUNE

Compact high-performance outdoor TV antenna. It has built-in amplifier and the power supply. It is available in a corrugated cardboard packing.

### Specification

	PECHORA			NEPTUNE
	- F	- DX	- DX 5V	- DX
Band	UHF			
Gain, dbi	9	30	30	37
Dimensions in package, mm	700x320x50			520x260x140
Weight, kg	0,7	0,82	0,7	1,6
Supply	-	220 V	STB	220 V





## OUTDOOR ANTENNA **SELENA MINI**

The compact outdoor passive HDTV antenna to receive signals DVB-T and DVB-T2. It is supplied with the wallbracket and cable. The colour is light grey.



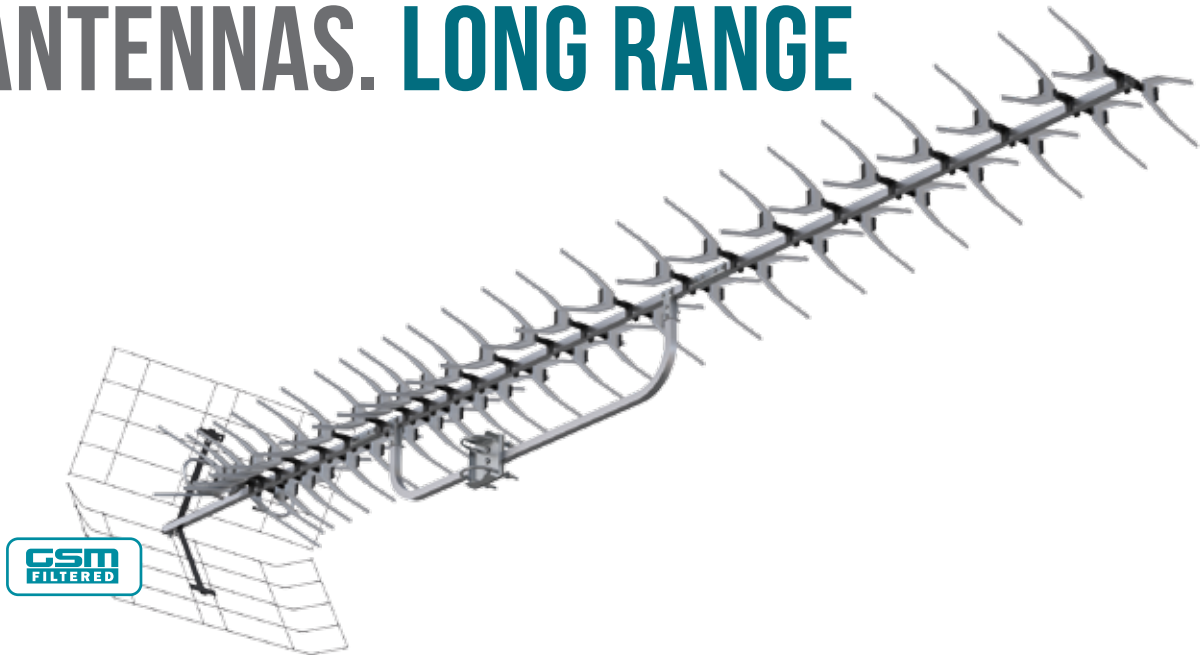
## OUTDOOR ANTENNA **SELENA DIGITAL**

It is a log-periodic passive antenna for reception of digital television DVB-T and DVB-T2. Selena Digital antenna is included in the Federal program for development of digital broadcasting as the user equipment.

### Specification

	SELENA MINI	SELENA DIGITAL
Band	UHF	
Gain, dbi	7	9
Dimensions in package, mm	330x320x50	714x312x45
Weight, kg	1	1,5

# HDTV OUTDOOR ANTENNAS. LONG RANGE

**DVB T2**


## OUTDOOR ANTENNA BAS X11102 MAXI

The BAS X11102 MAXI is a long-range UHF reception antenna for the most demanding conditions of signal reception. Perfect for countryside use. It includes GSM and LTE filters to suppress interference from base stations. The antenna is made of aluminum and coated or plated components so it is durable and long-lasting outdoors. Cabling is

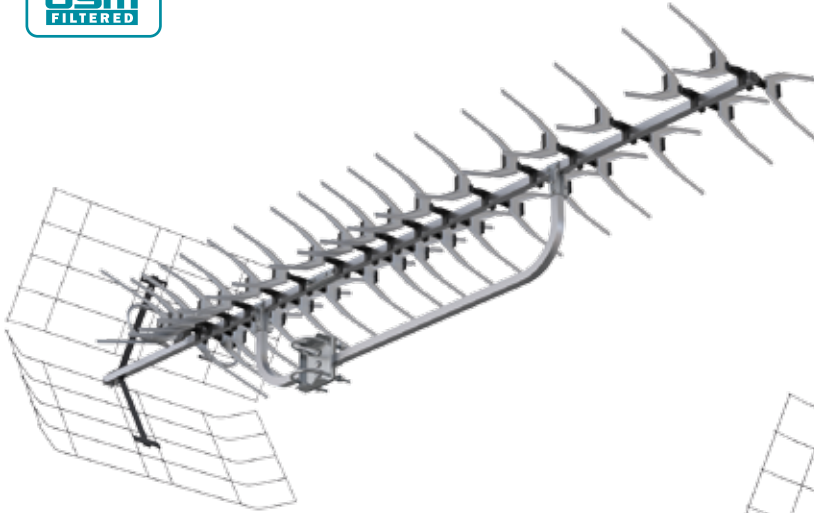
sold separately. The antenna has a different variants of powering. Antenna can be powered by the USB-input of the TV, computer, etc. with the help of the USB power adapter. Perhaps the usage of an additional amplifier «INDOOR USB» in case of a weak signal. Shipped unassembled.

**RECEPTION TESTED 120 km**
**8x1 15x15x1**

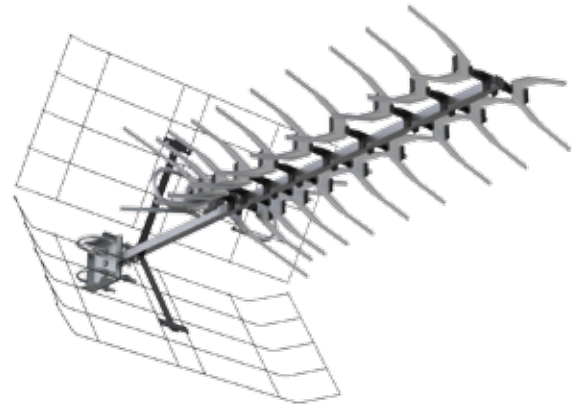
### Specification

	BAS X11102 MAXI		BAS X1174 MIDI		BAS X1142 SHORT	
	- P	- USB	- P	- USB	- P	- USB
Gain, dbi	18	38	16	36	14	34
Dimensions in package, mm	910x295x75					
Weight, kg	1		1			
Supply	-	USB	-	USB	-	USB





OUTDOOR ACTIVE ANTENNAE ARE NOT RECOMMENDED TO USE IN A SHORT DISTANCE FROM THE TRANSMITTING STATION. IT MAY LEAD TO AMPLIFIER OVERLOADING AND AFFECT THE QUALITY OF RECEIVING AND MAY EVEN CAUSE THE ANTENNA NONOPERABILITY



## OUTDOOR ANTENNA BAS X1174 MIDI

It is a long-range UHF reception antenna. Its directivity can provide optimize and improve reception in city or suburb. LTE and GSM protected.

The antenna is made of aluminum and coated or plated components so it is durable and long-lasting outdoors. Cabling is sold separately. The antenna has a different variants of powering.

Antenna can be powered by the USB-input of the TV, computer, etc. with the help of the USB power adapter. Perhaps the usage of an additional amplifier «INDOOR USB» in case of a weak signal.

Shipped unassembled.

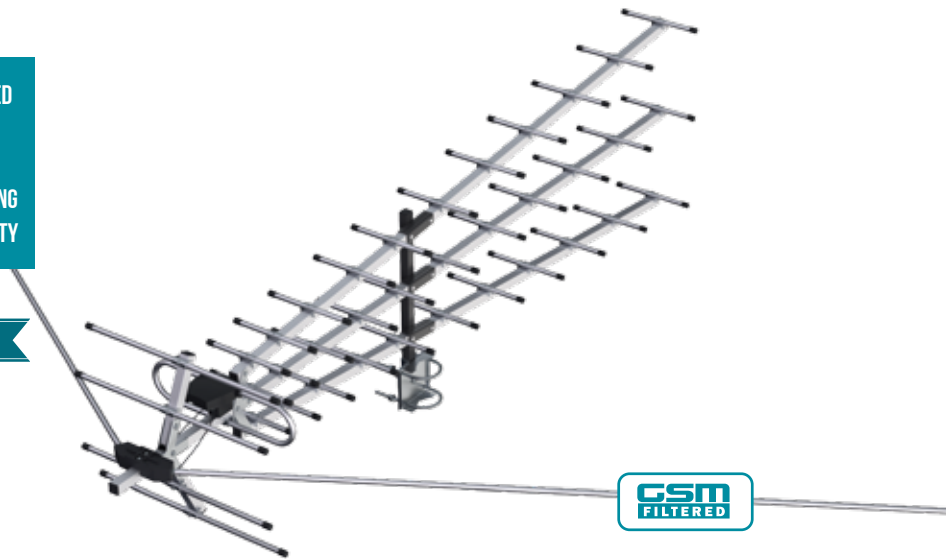


## OUTDOOR ANTENNA BAS X1142 SHORT

8x1 15x15x1

- OUTDOOR ACTIVE ANTENNAE ARE NOT RECOMMENDED TO USE IN A SHORT DISTANCE FROM THE TRANSMITTING STATION. IT MAY LEAD TO AMPLIFIER OVERLOADING AND AFFECT THE QUALITY OF RECEIVING AND MAY EVEN CAUSE THE ANTENNA NONOPERABILITY

RECEPTION TESTED

120  
km

## OUTDOOR ANTENNA TRITON

Outdoor antenna TRITON is suitable for zones of uncertain signal reception. It is efficient in the city and in the suburbs. The antenna is equipped with the anti-GSM filter that suppresses the signals of GSM base stations on the amplifier input.

### Specification

8x1 15x15x1

		TRITON S				TRITON M				TRITON XL			
		- P	- DX	- UHF	- UHF-DX	- P	- DX	- UHF	- UHF-DX	- P	- DX	- UHF	- UHF-DX
Band		VHF, UHF		UHF		VHF, UHF		UHF		VHF, UHF		UHF	
Gain, dbi	MB 1-5	1	21	-	-	2	22	-	-	2	22	-	-
	MB 6-12	2	22	-	-	3	23	-	-	3	23	-	-
	DMB	10	35	10	35	12	37	12	37	15	40	15	40
Dimensions in package, mm		500x255x130				1050x255x170				1370x255x190			
Weight, kg		1,6				1,8				2,6			

# ANTENNAS FOR FM-RADIO



## ANTENNA LIRA-FM

Indoor antenna LIRA-FM is used for receiving radio broadcasting in FM band. The antenna is compatible with any household stereo with coaxial connector for external antenna.



## ANTENNA VESTA-FM

It is a high-performance directional antenna for reception of FM radio broadcasting. It is suitable for both local and long-distance reception. It has high gain in one direction and suppresses signals in the reverse and side directions due to the directional properties of the design.

### Specification

	LIRA-FM	VESTA-FM	RADIUS-FM
Band	66-108	88-108	88-108
Gain, dbi	2	10	4
Dimensions in package, mm	350x80x40	1750x100x100	1750x100x100
Weight, kg	0,3	1,2	1

## ANTENNA RADIUS-FM

Outdoor antenna «Radius - FM» is designed for reception FM radio broadcasting in the city and beyond it. It has a omnidirection pattern - the ability to receive stations from different directions (cities).



DVB T2

# DIGITAL SET-TOP-BOX




## DIGITAL TV RECEIVER TVjet RE820HDT2

The new HD digital terrestrial receiver is designed to receive digital terrestrial broadcasting DVB-T2 MPEG-2/MPEG-4 H 264/AVC, it has a PVR recording function, a full HD(1920x1080) media player is built-in. The receiver is a separate block connected to the TV via a cable, it has a remote control.

## DIGITAL TV RECEIVER TVjet Plus

The receiver is supplied with indoor antenna «AntECO».

### Specification

	TVjet	TVjet Plus
Dimensions in package, mm	200x155x55	
Weight, kg	0,5	0,58

IS YOUR TV NOT COMPATIBLE WITH DVB-T2, BUT WORKING WELL AND YOU WANT TO ENJOY DIGITAL QUALITY?

WE HAVE A SOLUTION! SETS FOR DIGITAL TV RECEPTION PRODUCED IN OUR FACTORY MEET ALL THE REQUIREMENTS OF THE NEW TELECASTING FORMAT. THE SET INCLUDES EVERYTHING TO SWITCH TO THE MODERN TV STANDARD. YOU WILL BE PLEASANTLY SURPRISED BY THE NEW POSSIBILITIES OF THE DIGITAL TV.



## DIGITAL TV SET TVfuture indoor DVB-T2



активная антенна усиление антенны разъем видеовыхода электронный ТВ-гид запись ТВ-программ стандарты видео



форматы видео USB 2.0 time shift русское меню

The set includes EVERYTHING to switch to the modern TV standard. It consists of: a digital receiver, an indoor antenna and necessary cables. It is recommended to use within 10 km radius from the transmitter.

## DIGITAL TV SET TVfuture Outdoor DVB-T2



активная антенна усиление антенны разъем видеовыхода электронный ТВ-гид запись ТВ-программ стандарты видео форматы видео

The set includes EVERYTHING to switch to the modern TV standard. It consists of: a digital receiver, an outdoor antenna and necessary cables. It is recommended to use within 25 km radius from the transmitter.

### Specification

	TVfuture indoor	TVfuture Outdoor
Dimensions in package, mm	290x150x160	300x250x120
Weight, kg	0,75	1,7

# CAR ANTENNAS & ACCESSORIES

## CAR ANTENNA MAGISTRAL



The active car radio antenna «MAGISTRAL» is used for receiving radio signals in the ranges of LW, MW, HF, VHF/ FM Russian and European broadcast standards. The antenna is installed inside the car on the windshield or the rear window.

## CAR TV ANTENNA TRASSA FM-VIDEO



The all-wave active TV car antenna «Trassa FM-Video» is used for receiving TV signals in ranges VHF and UHF (1-12 and 21-69 channels). It is installed inside the car on the windshield or the rear window. The antenna is used for reception both analog and digital TV.



## CAR TV ANTENNA ATPB-02 CHAYKA

The Car active antenna «CHIKA» receives analog and digital TV signals in the range of VHF and UHF (1–12 and 21–69 channels) and radio signals in VHF/FM.

The antenna is installed on the side window of the vehicle so that the vibrators were outside, and the node matching with the amplifier inside the car, so it allows to achieve stable operation of the antenna and improve the reception quality in comparison with antennas of other manufacturers. The antenna can be connected simultaneously to the TV and the radio, because it has a built-in splitter — and no additional devices are required for connection!



# GSM ANTENNAS

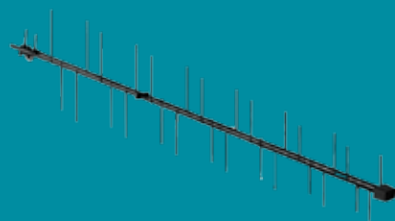


## ANTENNA GSM INDOOR

The antenna «GSM indoo» is designed for usage in alarm systems and data transmission. It includes 2 meter cable with the SMA connector. The gain is 7-8 dbi.



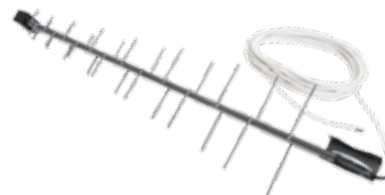
## ANTENNA LOGO 800/900



It is an outdoor directional antenna for usage in alarm systems and data transmission in GSM standard 900. It is equipped with the 8 meter cable with the SMA connector.



## ANTENNA LOGO 800/1900



It is an outdoor directional dual-band antenna for alarm systems and data transmission in the GSM 900 and GSM 1800. It is equipped with the 8 meter cable with the SMA connector. It is suitable to use in the systems of video surveillance in the 1.3 GHz band.

# CELLULAR AMPLIFIERS.

## LTE2600

### INDOOR CELLULAR AMPLIFIER

#### O-Range 2600

### 3 REASONS TO BUY ORANGE-2600

#### IF YOU NEED:

1. RELIABLE AND STABLE CONNECTION IN LTE.
2. REDUCTION OF HARMFUL INFLUENCE OF YOUR SMARTPHONE, MODEM OR TABLET AND INCREASE OF DATA TRANSFER RATE.
3. INCREASING OF WORKING TIME OF YOUR SMARTPHONE, TABLET WITHOUT CHARGING.



speed up coverage persons battery saving easy install charger

The Orange-2600 amplifier is designed to enhance quality of the mobile Internet standard 4G LTE/LTE+ (LTE 2600 FDD Band7/Band38) indoors. The set is a system of two modules: the reception module and the coverage module. The reception module is placed in the area of 4G signal (usually at the window) and the coverage module in the location of the mobile devices.


With the help of the amplifier you will be able to provide a stable 4G signal in the radius of 5 meters around the cover module. This is equal to the coverage area of 75 sq. m.

Orange-2600 amplifier is compatible with all devices equipped with 4G module (USB-modems, tablets, smartphones, laptops).



## OUTDOOR CELLULAR AMPLIFIER O-Range 2600 Plus



-  speed up
-  gain
-  coverage
-  persons
-  battery saving
-  easy install
-  charger

### Specification

	O-Range 2600	O-Range 2600 Plus
Operating frequency, Mhz	2500-2700	
Gain, dbi	до 60	до 75
Output power, dbm	10	
Dimensions in package, mm	220x150x75	250x235x120
Weight, kg	1	2

The Orange-2600 Plus amplifier is designed to improve the signal quality of the mobile Internet standard 4G LTE/LTE+ (LTE 2600 FDD Band7/Band38) indoors. The amplifier is a set of two units: an outdoor reception module and a coverage module. The

reception module is placed in the area of 4G signal (usually on the wall near the window or in the balcony), and the coverage module in location of your mobile devices.

# CELLULAR AMPLIFIERS.

## GSM900



### INDOOR CELLULAR AMPLIFIER

#### O-Range 900

The Orange-900 amplifier is designed to improve the quality of GSM signal indoors. The set consist of coverage module and a magnetic antenna. The antenna is placed in the area of GSM signal (usually at the window), and the coverage module in the location of mobile devices. With the help of the amplifier you will be able to provide a strong GSM signal within radius of 5 meters. This is equal to the coverage area of 75 sq. m.



## OUTDOOR CELLULAR AMPLIFIER O-Range 900 Plus



The Orange-900 Plus amplifier is designed to improve the quality of GSM signals in the 900MHz band indoors. The amplifier is a set of the coverage module and the external antenna. The antenna is placed outdoors and is directed to the base station. The coverage module is installed in the place where improvement of the GSM communication is needed.

### Specification

	O-Range 900	O-Range 900 Plus
Operating frequency, Mhz	860-940	
Gain, dbi	до 40	до 50
Output power, dbm	10	
Dimensions in package, mm	205x150x70	282x170x100
Weight, kg	0,5	0,9

# SETS FOR STRENGTHENING INTERNET SIGNALS



## SET TO GAIN INTERNET SIGNAL GreenWay 3G

### Specification

Gain, dbi	15-17
Dimensions in package, mm	290x165x85
Weight, kg	1,2

The GreenWay 3G set is designed to provide a stable access to the Internet via USB-radio modems in the areas of uncertain reception of the 3G networks (HSDPA/HSUPA/WCDMA) and also connect wireless devices to it through WiFi technology.

GreenWay 3G set can be used with any 3G USB modems equipped with the CRC9 connector. The set consists of the outdoor 3G antenna and the WiFi-router.

Due to the supplied WiFi-router, all devices that need access to the Internet can freely connect to it in any place indoors, even where the signal was initially weak or absent.

GreenWay 3G set comes with the wall bracket and fasteners, router and Ethernet cable; the software CD and necessary documentation are also included.





The GreenWay Combi 3G/4G set is designed to ensure a stable access to the Internet through the USB-radiomodems in the zones of uncertain reception of the 3G (HSDPA/HSUPA/WCDMA) and 4G (LTE) networks, and also to connect wireless devices to it by WiFi technology. GreenWay Combi 3G/4G set can be used with any 3G and 4G USB-modems equipped with CRC9 connector. The set consists of the outdoor panel antenna and a WiFi-router.

Due to the supplied WiFi-router, all devices that need access to the Internet can freely connect to it in any place indoors, even where the signal was initially weak or absent.

GreenWay Combi 3G/4G set comes with the wall bracket and fasteners, router and Ethernet cable; the software CD and necessary documentation are also included.



## SET TO GAIN INTERNET SIGNAL GREENWAY COMBI 3G/4G

### Specification

Gain, dbi	12,5-15
Dimensions in package, mm	335x275x80
Weight, kg	1,9

MANY USB-MODEM USERS HAVE PROBLEMS OF LOW SPEED AND UNSTABLE WORK OF WIRELESS INTERNET ACCESS. INTERNET SIGNAL AMPLIFIER PROVIDES STABLE ACCESS AND INCREASES DOWNLOAD SPEED. IT IS VERY EFFECTIVE OUTSIDE THE CITY, IN THE SUBURBS, IN THE BORDERS OF COVERAGE, IN THE BASEMENT ROOMS AND IN THE ZONES OF MANY RADIOINTERFERENCES.

## INTERNET SIGNAL AMPLIFIER CONNECT 3.5

The Connect 3.5 Internet signal amplifier is designed to provide stable access to the Internet via USB-radio modems in the areas of uncertain reception of GSM (GPRS/EDGE), 3G (HSDPA/HSUPA/WCDMA) and 4G (LTE, LTE Advanced) networks of all mobile operators. Due to the built-in Wi-Fi router UPVEL UR-312N4G, all devices that need the Internet access can freely connect to it in any point of the apartment or a country house. The amplifier is compatible with almost any 3G/4G modems.



### Specification

Gain, dbi	7-9
Dimensions in package, mm	300x280x30
Weight, kg	0,55





DETAILS ABOUT THE WORKING PECULIARITIES, RESULTS OF TESTING IN DIFFERENT CONDITIONS COMMENTS AND REVIEWS OF USERS ARE IN [CONNECT.REMO-ZAVOD.RU](http://CONNECT.REMO-ZAVOD.RU)



## INTERNET SIGNAL AMPLIFIER **CONNECT 3.0**

The Connect 3.0 is designed for usage together with USB modems in GSM, UMTS, HSDPA, 3G, LTE and LTE Advanced networks. Application of the Internet signal amplifier does not require opening the modem or purchasing an adapter, so it preserves the manufacturer's warranty and eliminates unnecessary spending.

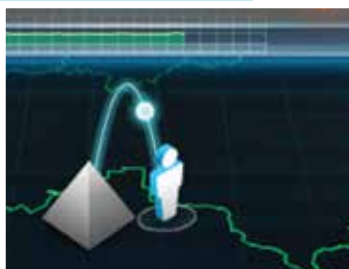
### Specification

Gain, dbi	22-28
Dimensions in package, mm	295X275X35
Weight, kg	0,5



## INDOOR ANTENNA LTE MiMO INDOOR

The LTE MIMO INDOOR antenna is designed for usage together with modems that work in cellular networks of the third (UMTS/WCDMA/HSDPA/HSUPA) and fourth (LTE) generations and have connectors for external antennas. The connector type is CRC9. It can also be manufactured with a TS9 type of connectors, etc.



### Specification

Gain, dbi	7-9
Dimensions in package, mm	285x143x160
Weight, kg	0,54





## INTERNET SIGNAL AMPLIFIER CONNECT TRAVEL

It is a compact antenna system designed to improve the efficiency of USB modems and increase the area of the mobile Internet coverage. It is most effective in LTE networks. It supports the following communications standards: 3G (HSDPA/HSUPA/WCDMA), 4G (HSPA+, LTE, WiMax).

## ANTENNA 3G/4G «CONTACT MiMo»

The Contact MIMO 3G/4G antenna is designed for usage with 3G/LTE-routers and modems with connectors for external antennas. This antenna works in 4G networks LTE/LTE+ (Band 3, 7, 20, 38) and 3G networks. If there are two connectors in the router or modem it is possible to realize the benefits of

### Specification

#### CONNECT-TRAVEL

Gain, dbi	3-5
Dimensions in package, mm	180x200x50
Weight, kg	0,23

#### CONTACT MiMo

Gain, dbi	7-9
Dimensions in package, mm	130x115x70
Weight, kg	0,15



LTE technology MIMO. The antenna is installed on the window glass and is very easy to operate. The antenna can be used in a train or a car, providing a stable connection in the conditions of unstable coverage.

SUPPORTING OF UMTS2100, LTE2600, SUPPORT LTE800 BAND MAKES IT POSSIBLE TO USE THE ANTENNA IN THE AGGREGATION MODE. IF YOU NEED MIMO WE RECOMMEND TO USE TWO ANTENNA INSTALLED ACCORDING MIMO STANDARD.

# OUTDOOR ANTENNAS 3G/4G



## OUTDOOR ANTENNA CHEGET 3G/4G

The Cheget 3G/4G antenna is designed to improve stability and increase the speed of data transmission of wireless devices in 3G, 4G and Wi-Fi networks. It is supplied with a cable with the FME-female connector, and a universal bracket that allows installing antenna on the wall, mast or other vertical structures.

### Specification

Gain, dbi	2-3, 10-14
Dimensions in package, mm	440x105x50
Weight, kg	0,5



## OUTDOOR ANTENNA ULTRA 3G/4G

It's an universal antenna for usage with modern USB-modems that have connector for external antenna. It supports operation in the networks UMTS 2100 (3G) and LTE800, LTE2600 (4G and 4G+).

### Specification

Gain, dbi	18
Dimensions in package, mm	290x170x80
Weight, kg	0,97



## OUTDOOR ANTENNA 3G BARS 3G

It's an outdoor antenna, designed for usage with almost any 3G modems that work in the networks UMTS 2100 (HSDPA, HSUPA, WCDMA) and are equipped with the antenna connector CRC9. The most important characteristics : lightweight, sectional structure, a high gain, very compact and easy for transportation. It is supplied with a cable with FME connector, adaptor FME-CRC9 and a universal bracket. It supports the following communication standards: UMTS 2100 (HSDPA, HSUPA, WCDMA), GSM-1800/1900 (EDGE).



## OUTDOOR ANTENNA LTE Rys 4G

It's an outdoor antenna, designed for usage with almost any 4G modem, working in LTE (LTE FDD Band7 2600 and Band38) networks and equipped with antenna connector CRC9. The most important characteristics : lightweight, sectional structure, a high gain, very compact and easy for transportation. It is supplied with a cable with FME connector, adaptor FME-CRC9 and a universal bracket. It supports the following communication: LTE (LTE FDD Band7 2600 and Band38).

### Specification

	BARS 3G	Rys 4G
Gain, dbi	17	17
Dimensions in package, mm	290x170x80	
Weight, kg	1	



## INTERNET SIGNAL AMPLIFIER CONNECT STREET

The Connect Street Internet signal amplifier is an outdoor antenna, designed for usage with almost any 3G modems that work in the networks UMTS-2100. The unique design of «Connect Street» allows you to place the antenna outdoors on a bracket or a mast, and the modem will remain in the premises for receiving and transmitting the signal through the universal resonator block.

### Specification

Gain, dbi	15-18
Dimensions in package, mm	565x175x50
Weight, kg	0,65



## INTERNET SIGNAL AMPLIFIER CONNECT STREET MINI

It's an outdoor antenna, designed for usage with almost any 3G modems that work in the networks UMTS 2100 (HSDPA, HSUPA, WCDMA). It is supplied with the resonator block, which allows use the modems without connectors for an external antenna. It is light weighted, has collapsible structure and a high gain.

### Specification

Gain, dbi	14-16
Dimensions in package, mm	290x165x85
Weight, kg	0,65



## INTERNET SIGNAL AMPLIFIER **CONNECT STREET MINI LTE**

It's an outdoor antenna, designed for usage with almost any LTE modems operating in networks 4G/LTE 2600. It includes the resonator block puller that allows use modems that do not have connectors for an external antenna. Lightweight collapsible design, high gain.

### Specification

Gain, dbi	18
Dimensions in package, mm	290x165x85
Weight, kg	0,65



## INTERNET SIGNAL AMPLIFIER **CONNECT STREET UNIVERSAL 3G/4G**

It's a universal set for usage with modern USB modems in almost any mobile networks, the operating frequencies of the antenna are in 1700-2700mhz range. It allows to work in networks of the second (GSM1800), third (umts2100 network) and fourth (LTE2600) generations. The main components of Street Combi are universal unit for a modem and a broadband panel antenna with the gain up to 15 dB.

### Specification

Gain, dbi	12-15
Dimensions in package, mm	335x270x80
Weight, kg	3



## OUTDOOR ANTENNA 3G/LTE FLAT COMBI

The FLAT COMBI antenna designed for outdoor installation and works together with the USB-radio modems in the zone of the uncertain signal reception, providing stable access to the network.

## OUTDOOR ANTENNA 3G/LTE FLAT COMBI MIMO

The FLAT COMBI MIMO antenna designed for outdoor installation and works together with the USB-radio modems in the zone of the uncertain signal reception, providing stable access to the network. It has two cables for connection with the SMA-m connectors. Support MIMO 2x2.

### Specification

	FLAT COMBI	FLAT COMBI MiMo	FLAT COMBI SMA
Band	1700-2700		
Gain, dbi	12,5 - 15		
Dimensions in package, mm	280x240x100	280x240x100	280x240x100
Weight, kg	1,3	1,6	1,3
Connector	FME-f	2xSMA-m	SMA-m



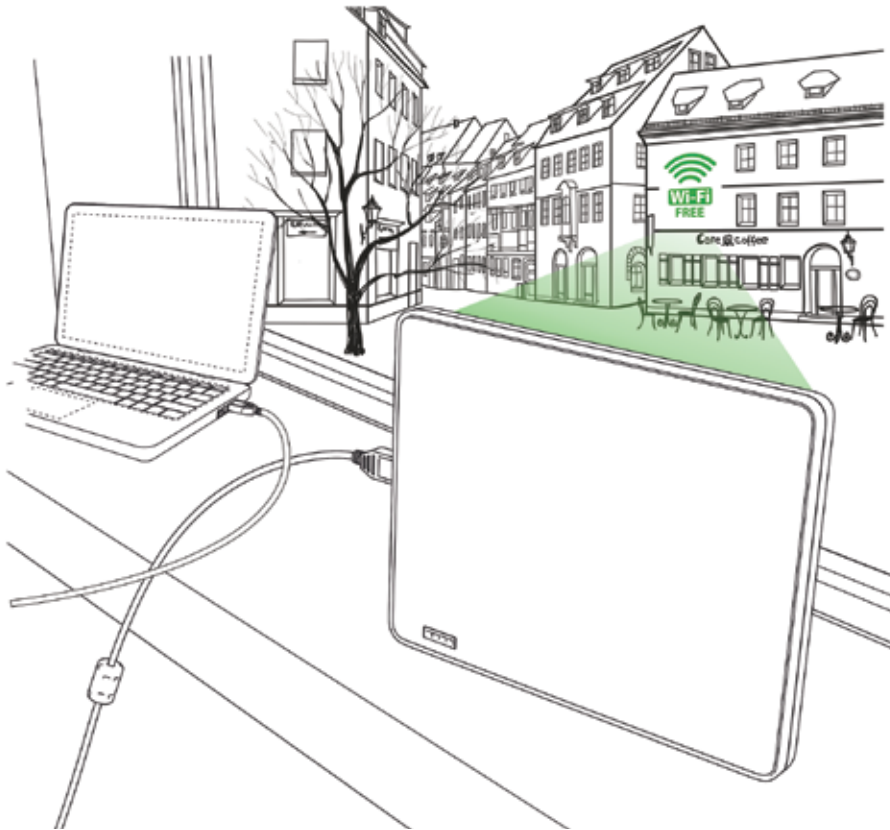
## OUTDOOR ANTENNAS KURS

The family of outdoor antennas «KURS» is made of aluminum and is intended for usage in alarm systems and data transmission. Antenna «KURS 450» is designed to work in LTE450 networks or UHF radio. The antenna «KURS 800» allows to provide access to the network LTE 800 on the border of the coverage area. Antenna «KURS-900/1800» is designed to work with GSM modems and terminals.

### Specification

	KURS-450	KURS-800	KURS-900	KURS-900/1800
Band	430-460	790-860	860-960	860-960, 1710-1890
Gain, dBi	10			
Dimensions in package, mm	800x400 x60	500x250x60		
Weight, kg	1,3	1,2		

# INDOOR USB WIFI ANTENNA



## INDOOR USB WIFI ANTENNA WiFiAGENT

The WiFiAgent is compact indoor antenna for using to connecting to remote wifi networks. it has USB interface for easy connection to any modern computer. Inbuilt wifi adapter can connect to public wifi zone with distance up to 1000m







#### Specification

Gain, dbi	up to 15
Distance of connection	up to 1000m
Wi-Fi standards	IEEE 802.11b/g/n
Band, MHz.	2400
Data transfer rate	up to 150Mbps
Dimensions in package, mm	270x295x35
Cable, m	3
Weight, kg	0,8



OFTEN, WE DO NOT HAVE FREE WIFI IN THE ACCOMODATION, BUT SOMEWHERE NEAR, YOU CAN HAVE A FREE WIFI INTERNET ACCESS. THE WiFiAGENT CAN HELP TO CONNECT TO A PUBLIC WIFI FROM YOUR ROOM OR AUTO

# ANTENNAS FOR WIFI ROUTERS



## OUTDOOR ANTENNA **BAS-2301 WiFi**

The antenna «BAS-2301 WiFi» is designed for outdoor installation. It can be used together with Wi-Fi routers which have connections for external antennas. It allows you to transmit a Wi-Fi signal or receive a signal from the remote access point at a distance of 1.5 km.

### Specification

Band	2300-2600
Gain, dbi	12.5 - 15
Dimensions in package, mm	280X240X100
Weight, kg	1,3
Connector	RP-SMA
Cable	5m RG58 low loss

## ANTENNA FOR WIFI ROUTER **WiFiLADDER. BAS2002**



### Specification

Gain, dbi	8-12
Dimensions in package, mm	195X87X20
Weight, kg	0,03



ANTENNA WIFILADDER HAS NO WIRES OR CABLES, DOES NOT REQUIRE CONNECTION TO THE ROUTER. CAN BE USED ONLY WITH ROUTER EQUIPPED EXTERNAL ANTENNA

### YOU NEED WIFILADDER IF:

- wifi signal is weak in your favorite place in home;
- you have interference from neighbors wifi network;
- you need provide the wifi signal outside ( for example to BBQ zone).



The antenna WiFiLadder is designed to increase the coverage of the Wi-Fi network in the certain direction. The antenna is installed on the standart antennas of Wi-Fi routers and access points. It provides amplification of signals in one direction and suppresses interference in other directions by directional diagram forming.



### WIFILADDER CAN NOT HELP IF:

- your router working in 5ghz band (802.11a);
- your router have only inner antenna;
- you want to increase signal in all directions.

WALL BRACKETS ARE VERY RELIABLE AND PROVIDE GOOD FIXATION EVEN IN ICING AND HURRICANE CONDITIONS, THEY HAVE GALVANIC OR POLYMER COATING.

# WALL BRACKETS. AERIAL



**BRACKET TURNING  
SCARABEY-1M**

Turning bracket for antenna.  
Length-50cm.



**BRACKET TURNING  
SCARABEY-2M**

Turning bracket for antenna.  
Length-100cm.



**BRACKET  
SCARABEY-3M**

Lightweight and durable bracket for two antenna.



**BRACKETS  
SCARABEY-4M**

Lightweight and durable bracket for antenna. Length-50cm.



**BRACKETS  
SCARABEY-6M**

Lightweight and durable bracket for antenna. Length-20cm.



**BRACKETS  
SCARABEY-7M**

Lightweight and durable bracket for antenna. Length-30cm.

# WALL BRACKETS. FOR SATELLITE DISHES



## VSAT

A universal heavy bracket VSAT is required for installation of the ground receiving antennas for VSAT terminals. The bracket is versatile in mounting — it can be installed both on vertical and on horizontal surfaces. In addition, the product can be supplied with a special frame for installation of VSAT antenna on the roof without destroying the soft roof. VSAT bracket has a bore diameter of 73 mm, and it is possible to install antennas with a diameter of 0.9–1.2 m with the wind loads up to 25 m/s (the destructive force is more than 40 m/s).



## BRACKET SKN-0,6

To install satellite dishes with a diameter of 0.6 m.  
Diameter - 32 mm.



## BRACKET SKN-0,6/0,9

To install satellite dishes with a diameter of 0.6-0.9 m.  
Diameter - 32 mm.



## BRACKET SKN-1,2Y

To install satellite dishes with a diameter of 1.2 m.  
Diameter - 38 mm.

# BRACKET FOR STB



VESA MOUNT



## HANGING FRAME UNI-TV

Universal bracket for STB «UNI-TV» and «UNI-TV PLUS» are suitable for efficient placement of different devices around the modern TV set, such as TV receivers, cordless phones, headphones, or Wi-Fi routers. The installation does not require drilling the walls. The stand is fastened for VESA mount of the modern TV set.

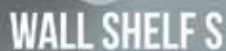
### Specification

	UNI-TV	UNI-TV PLUS
Dimensions in package, mm	250x135x35	
Weight, kg	0,6	0,7
Width of STB	120-220	180-300
Depth of STB	150	200

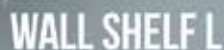




WALL SHELF M



WALL SHELF S



WALL SHELF L



## WALL SHELF

**Wall Shelf S** – the Wall Shelf is a functional hanging shelf which helps place TV tuners, digital receivers, wi-fi routers, TV remotes or small devices. Load capacity is 1.5 kg.

**Wall Shelf M** – Wall Shelf M is a compact and space-saving shelf, which will easily fit phone chargers, remote controls, satellite receivers, DVD players, Wi-Fi routers or headphones. Load capacity is 2.5 kg.

**Wall Shelf L** – Wall Shelf L is designed to accommodate video game consoles from different manufacturers with controllers, TV remotes, decorative ornaments and many other accessories. Load capacity is 5.5 kg.



WALL SHELF HELPS TO ORGANIZE SPACE AROUND YOUR TV  
AND ALLOW TO USE HOME GADGETS MORE COMFORTABLE.

# TV ACCESSORIES



## ANTENNA AMPLIFIERS USH Inline

The INLINE is an amplifier in a metal housing with F-connectors on input and output for installation in the gap of the coaxial cable (the power is also supplied through it). Input and output impedance is 75 Ohm. Products are used indoor or outdoor in any climate conditions. The INLINE amplifiers are available with power unit or without it.



## ANTENNA AMPLIFIERS INDOOR USH Indoor

The INDOOR is an amplifier for the indoor usage near the TV set. The set includes a power supply. The Indoor amplifiers are equipped with connectors IEC and are easy to connect.



## ANTENNA AMPLIFIERS UTVK

The UTVK is an amplifier to compensate for losses in cable distribution system. It is suitable for operation with terrestrial antennas and with the cable networks.

## DVBT2 AMPLIFIER BOOSTER-DIGI



It's a two-stage amplifier with high output level and low noise. It connects directly to the antenna jack of the TV set or a digital STB (set-top-box). The power supply is included.

	Inline			Indoor			utvk		BOOSTER-DIGI	USH 5V
	-1A	-2A-DX	-4A	-1A	-2A-DX	-4A	-1A	-2A-DX		
Band	50-800		470-800	50-800		470-800	50-800		470-800	170-800
Gain, db	18-22	28-32	22	18-22	28-32	0-22	18-22	28-32	18-22	22
Dimensions in package, mm	180x130x60									80x90 x20
Macca, kg	0,25									
Supply	220 V									5V





### SPLITTER DMT-3

Distributes the signal across 5-900 MHz frequency band (channels 1-69, plus the return channel) 3 user (TV).



### SPLITTER DMT-4

Distributes the signal across 5-900 MHz frequency band (channels 1-69, plus the return channel) 4 user (TV).



### SPLITTER DMT-2

It distributes the signal across the frequency band 5-900 MHz (1-69 channels, plus a return channel) 2 user (TV).



### USB INJECTOR BAS 8001

USB injector is used to supply power to active antennas from USB socket on your TV or chargers.



### INDOOR TV AMPLIFIER POWERED BY USB BAS 8102



### DIPLEXER CTM-2

It is intended to add signals 1-12 and 21-69 channels fishing.



### TRIPLEXER CTM-2-1

Designed for adding the signals 1-5 and 6-69 chamber channels.



### TRIPLEXER CTM-3

It combines the signals 1-5, 6-12 and 21-69 channels. Perfect for creating a complex of three antennas!



### POWER ADAPTER АП-1000

Essential for the power supply to the power active devices over coaxial cable.

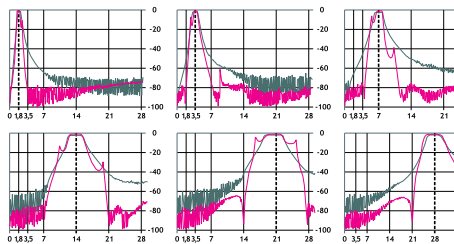
# PRODUCTS FOR HAMRADIO



## SET OF BANDPASS FILTER BPF LUXURY



Sample response to a set of filters



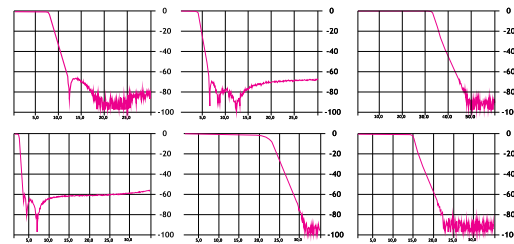
Complete filter BPF and BPF-LUXURY intended to ensure electromagnetic compatibility multiple simultaneous transmitters amateur radio stations. Such kits needed collective stations, working in major competitions, as well as individuals in the category SO2R, major radio expedition. Each set includes 6 filters - BPF-1,8, 3,5-BPF, BPF-7-BPF 14, BPF-21, BPF-28 (1.8, 3.5, 7, 14, 21 and 28 MHz, respectively). Filters provide a «cut-off» of interference from stations operating in another band, and connected between the transceiver and amplifier. Filters BPF-LUXURY, in contrast to the BPF, performed by the modified scheme, using high-quality cores firms Micrometalls, which improves their performance.

	STANDART	LUXURY
Maximum permissible continuous power, Wt	100	200
Direct loss, no more, db	0,8	0,6
Fading in the neighboring range, no less, db	40	80
The standing wave ratio, not worse	1,25:1	1,25:1
Impedance, Om	50	50

## THE LOW PASS FILTER HIGH POWER LPF-HP



Sample response to a set of filters



Designed to be installed at the transmitter output and allow it to suppress the out-band radiation. For all filters LPF-HP maximum continuous power of 3.5 kW! Filters are made in the metal housing 550 × 120 × 120 mm. It's a Kauer lowpass filters built with legendary Soviet Army capacitors K15y.

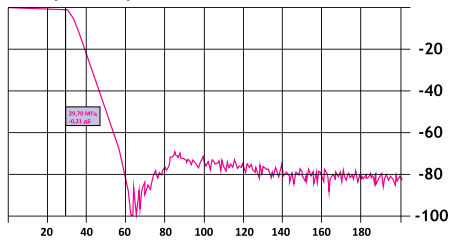
	-10	-15	-20	-40	-80	-160
Frequency cut off, MHz	30	22	14,5	7,4	4,0	2,0
Impedance, Om	50					
Losses in bandpass, no more than, db	0,2					
The standing wave ratio, not worse	1,2:1					
Second and the following main signal harmonic attenuation, no less than, db	80					
Maximum continuous power, Wt	3500					

\* TOGETHER WITH BPF И BPF LUXURY SETS, LPF-HP AND LPF-1 BARRIER FILTERS WE SUPPLY DIAGRAMS S21 (A4X) И S11(KCBH) TAKEN FROM THE COMPLEX COEFFICIENT AND REFLECTION METER (THE VECTOR NETWORK ANALYZER). THESE DIAGRAMS SHOW CHARACTERISTICS OF EVERY FILTER IN GREAT DETAILS.

## LOW-PASS FILTER LPF-1 BARRIER



Sample response to a set of filters



The low pass filter LPF-1 BARRIER is designed to reduce the noise level of electronic equipment and the suppression band emissions transmitting devices operating at frequencies up to 30 MHz. BARRIER LPF-1 is a multiaxial passive inductance-capacitance low pass filter. The product is made in a metal housing, is connected to the load and the transmitter via coaxial connectors SO-239.

Bandpass, MHz	1,8–29
Impedance, Ohm	50
Losses in bandpass, no more than, dbb	0,2
The standing wave ratio, not worse	1,2:1
Attenuation at frequencies more than 40 MHz, no less, db	60
Permissible continuous power, no more, kw	1,5
Permissible peak power no more, kw	5,0



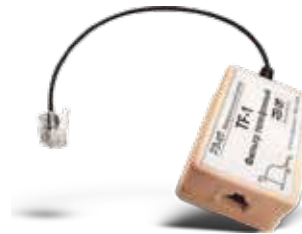
SINCE 2013 FILTERS HAVE BEEN MADE OF ALUMINIUM AND CONSEQUENTLY THEY HAVE BECOME LIGHTER.

## HIGH-PASS FILTER ANTI-TVI Indoor и ANTI-TVI Inline



Highpass filter series ANTI-TVI designed to protect television sets from powerful signals amateur and professional radios. It connects directly to the antenna terminal on the TV or in a section of the cable.

## TELEPHONE FILTER TF-1



The filter is designed to reduce interference on the telephone line from the amateur and professional transmitters.

## BROADBAND AMPLIFIER NOISE IMMUNITY FOR ANTENNA TYPE «LATTICE» Protect-1000



TV antenna amplifier Antenna type «grid» with built-in filters to protect against overload signals of amateur and professional transmitters.

# METALL CABINETS FOR HOME AUTOMATIC



**OEM/ODM WELCOME**

**FACTORY INFORMATION**

**OUR BRANDS**

**HDTV INDOOR ANTENNAS**

**HDTV OUTDOOR ANTENNAS .CITY**

**HDTV OUTDOOR ANTENNAS. SUBURBAN**

**HDTV OUTDOOR ANTENNAS. LONG RANGE**

**ANTENNAS FOR FM-RADIO**

**DIGITAL SET-TOP-BOX**

**CAR ANTENNAS AND ACCESSORIES**

**GSM ANTENNAS**

**CELLULAR AMPLIFIERS. LTE2600**

**CELLULAR AMPLIFIERS. GSM900**

**KITS TO ENHANCE INTERNET SIGNAL**

**OUTDOOR ANTENNAS 3G/4G**

**INDOOR USB WIFI ANTENNA**

**ANTENNAS FOR WIFI-ROUTERS**

**WALL BRACKETS. AERIAL**

**WALL BRACKETS FOR SATELLITE DISHES**

**BRACKET FOR STB**

**WALL SHELF**

**TV ACCESSORIES**

**PRODUCTS FOR HAMRADIO**

**METALL CABINETS FOR HOME AUTOMATIC**

**REMO**  
**ELECTRONICS**

REMO GROUP  
410054, 50-let Oktyabrya, 101.  
Saratov, RUSSIA  
Tel. / Fax: +7 (8452) 495-232, 495-242.  
[online@remo-zavod.ru](mailto:online@remo-zavod.ru)

